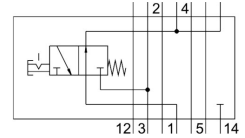
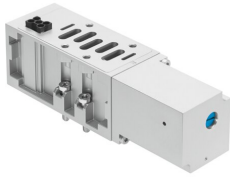


Vertical pressure shut-off plate VABF-S2-2-L1D1-C

FESTO

Part number: 555791



 [General operating condition](#)

Data sheet

Feature	Value
Construction width	54 mm
Based on standard	ISO 5599-2
Mounting position	optional
Vertical pneumatic linkage	Shut-off for 1
Symbol	00991890
Operating pressure	-0.09 MPa ... 1 MPa
Operating pressure	-0.9 bar ... 10 bar
Inlet pressure 1	0.5 bar ... 10 bar
Inlet pressure 1	0.05 MPa ... 1 MPa
Inlet pressure 1	7.25 psi ... 145 psi
Standard nominal flow rate (standardised to DIN 1343)	1950 l/min
CE mark (see declaration of conformity)	To EU Low Voltage Directive
UKCA marking (see declaration of conformity)	To UK regulations for electrical equipment
Operating medium	Compressed air to ISO 8573-1:2010 [7:4:4]
Note on operating and pilot medium	Lubricated operation possible (in which case lubricated operation will always be required)
Corrosion resistance class CRC	0 - No corrosion stress
LABS (PWIS) conformity	VDMA24364-B1/B2-L
Degree of protection	IP65 NEMA 4
Ambient temperature	-5 °C ... 50 °C
Product weight	1030 g
Mounting with vertical stacking	On manifold sub-base On individual sub-base
Note on materials	RoHS-compliant
Material housing	Die-cast aluminium