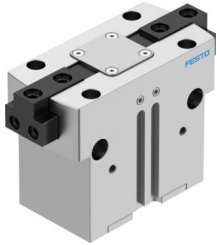


# Parallel gripper HGPT-40-A-B-G1

Part number: 560217

FESTO



 [General operating condition](#)

## Data sheet

Feature	Value
Size	40
Stroke per gripper jaws	10 mm
Max. replacement accuracy	≤0.2 mm
Max. angular gripper jaw backlash ax, ay	≤0.1 deg
Max. gripper jaw backlash Sz	≤0.02 mm
Rotationally symmetrical	≤0.2 mm
Repetition accuracy, gripper	≤0.05 mm
Number of gripper jaws	2
Drive system	Pneumatic
Mounting position	optional
Mode of operation	Double-acting
Gripper function	Parallel
Gripper force back-up	During opening
Design	Wedge-shaped drive Force pilot operated motion sequence
Position detection	Via proximity switch
Symbol	00995947
Operating pressure	4 bar ... 8 bar
Operating pressure of blocked air	0 bar ... 0.5 bar
Max. operating frequency of gripper	≤2 Hz
Min. opening time at 0.6 MPa (6 bar, 87 psi)	67 ms
Min. closing time at 0.6 MPa (6 bar, 87 psi)	135 ms
Max. mass per external gripper finger	310 g
Operating medium	Compressed air to ISO 8573-1:2010 [7:4:4]
Note on operating and pilot medium	Lubricated operation possible (in which case lubricated operation will always be required)
Corrosion resistance class CRC	2 - Moderate corrosion stress
LABS (PWIS) conformity	VDMA24364-B1/B2-L
Degree of protection	IP40
Ambient temperature	5 °C ... 60 °C
Mass moment of inertia	10.99 kgcm <sup>2</sup>
Max. force on gripper jaw Fz static	2500 N
Max. torque at gripper Mx static	100 Nm
Max. torque at gripper My static	90 Nm
Max. torque at gripper Mz static	75 Nm
Lubrication interval for guide components	5 MioCyc

<b>Feature</b>	<b>Value</b>
Product weight	1075 g
Type of mounting	Either: Via female thread and centring sleeve Via through-hole and centring sleeve Via through-hole and dowel pin Via female thread and dowel pin
Pneumatic connection, blocked air	M5
Pneumatic connection	M5
Note on materials	RoHS-compliant
Material cover cap	High-alloy stainless steel
Material housing	Anodised aluminium
Material gripper jaws	Hardened steel