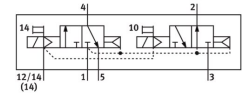


Solenoid valve VSVA-B-T32H-AZD-D1-1R5L

Part number: 561371

FESTO



General operating condition

Data sheet

| Feature | Value |
|---|---|
| Valve function | 2x3/2-way, open/closed, monostable |
| Type of actuation | Electric |
| Construction width | 42 mm |
| Standard nominal flow rate (standardised to DIN 1343) | 1100 l/min |
| pneumatic working port | Sub-base size 1 to ISO 5599-1 G1/4 |
| Operating voltage | 24V DC |
| Operating pressure | 0.3 MPa ... 1 MPa |
| Operating pressure | 3 bar ... 10 bar |
| Design | Piston gate valve |
| Type of reset | Pneumatic spring |
| Approval | c UL us - Recognized (OL) |
| Degree of protection | IP65 NEMA 4 |
| Nominal size | 11 mm |
| Grid dimension | 43 mm |
| Exhaust-air function | With flow control option Via throttle plate Via individual sub-base |
| Sealing principle | Soft |
| Mounting position | optional |
| Conforms to standard | ISO 5599-1 |
| Manual override | Detenting Non-detenting |
| Type of piloting | Pilot actuated |
| Pilot air supply | External |
| Flow direction | Non-reversible |
| Symbol | 00991818 |
| lap | Overlap |
| Signal status display | LED |
| Pilot pressure | 0.3 MPa ... 1 MPa |
| Pilot pressure | 3 bar ... 10 bar |
| Flow rate of valve | 1600 l/min |
| Flow rate of valve on individual sub-base | 1200 l/min |
| Flow rate of pneumatically interlinked valve | 1100 l/min |
| Switching time off | 38 ms |
| Switching time on | 20 ms |

| Feature | Value |
|--|--|
| Duty cycle | 100% |
| Max. positive test pulse with 0 signal | 1600 µs |
| Max. negative test pulse with 1 signal | 1100 µs |
| Characteristic coil data | 24 V DC: 1.3 W |
| Permissible voltage fluctuations | +/- 10 % |
| Operating medium | Compressed air to ISO 8573-1:2010 [7:4:4] |
| Note on operating and pilot medium | Lubricated operation possible (in which case lubricated operation will always be required) |
| Vibration resistance | Transport application test with severity level 2 to FN 942017-4 and EN 60068-2-6 |
| Shock resistance | Shock test with severity level 2 to FN 942017-5 and EN 60068-2-27 |
| Corrosion resistance class CRC | 0 - No corrosion stress |
| LABS (PWIS) conformity | VDMA24364-B1/B2-L |
| Media temperature | -5 °C ... 50 °C |
| Relative air humidity | 0 - 90% |
| Pilot medium | Compressed air to ISO 8573-1:2010 [7:4:4] |
| Ambient temperature | -5 °C ... 50 °C |
| Product weight | 442 g |
| Electrical connection | 3-pin M12x1 Central plug Round design |
| Type of mounting | On sub-base |
| Pilot air port 12/14 | Sub-base size 1 to ISO 5599-1 |
| Pilot exhaust port 82/84 | Ducted Not ducted as per standard Either: |
| Pneumatic connection, port 1 | Sub-base size 1 to ISO 5599-1 |
| Pneumatic connection, port 2 | Sub-base size 1 to ISO 5599-1 |
| Pneumatic connection, port 3 | Sub-base size 1 to ISO 5599-1 |
| Pneumatic connection, port 4 | Sub-base size 1 to ISO 5599-1 |
| Pneumatic connection, port 5 | Sub-base size 1 to ISO 5599-1 |
| Note on materials | RoHS-compliant |
| Material seals | FPM HNBR NBR |
| Material housing | Die-cast aluminium PA |
| Material screws | Steel Galvanised |