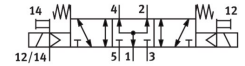


Solenoid valve VSVA-B-P53U-ZD-D1-1R5L

Part number: 561378

FESTO



 [General operating condition](#)

Data sheet

Feature	Value
Valve function	5/3-way, pressurised
Type of actuation	Electrical
Construction width	42 mm
Standard nominal flow rate (standardised to DIN 1343)	1300 l/min
pneumatic working port	Sub-base size 1 to ISO 5599-1 G1/4
Operating voltage	24 V DC
Operating pressure	-0.09 MPa ... 1.6 MPa
Operating pressure	-0.9 bar ... 16 bar
Design	Piston gate valve
Approval	c UL us - Recognised (Oil)
Degree of protection	IP65 NEMA 4
Nominal size	11 mm
Grid dimension	43 mm
Exhaust-air function	Can be throttled Via throttle plate Via individual sub-base
Sealing principle	Soft
Mounting position	Any
Conforms to standard	ISO 5599-1
Manual override	Detenting Non-detenting
Type of piloting	Piloted
Pilot air supply	External
Flow direction	Any
Symbol	00991753
lap	Overlap
Signal status display	LED
Pilot pressure	0.3 MPa ... 1 MPa
Pilot pressure	3 bar ... 10 bar
Flow rate of valve	1900 l/min
Flow rate of valve on individual sub-base	1400 l/min
Flow rate of pneumatically interlinked valve	1300 l/min
Switching time off	65 ms
Switching time on	22 ms
Duty cycle	100%

Feature	Value
Max. positive test pulse with 0 signal	1400 µs
Max. negative test pulse with 1 signal	900 µs
Characteristic coil data	24 V DC: 1.6 W
Permissible voltage fluctuations	+/-10%
Operating medium	Compressed air to ISO 8573-1:2010 [7:4:4]
Note on operating and pilot medium	Lubricated operation possible (in which case lubricated operation will always be required)
Vibration resistance	Transport application test with severity level 2 to FN 942017-4 and EN 60068-2-6
Shock resistance	Shock test with severity level 2 to FN 942017-5 and EN 60068-2-27
Corrosion resistance class CRC	0 - No corrosion stress
LABS (PWIS) conformity	VDMA24364-B1/B2-L
Media temperature	-5 °C ... 50 °C
Relative air humidity	0 - 90%
Pilot medium	Compressed air to ISO 8573-1:2010 [7:4:4]
Ambient temperature	-5 °C ... 50 °C
Product weight	456 g
Electrical connection	3-pin M12x1 Central plug Round design
Type of mounting	On sub-base
Pilot air port 12/14	Sub-base size 1 to ISO 5599-1
Pilot exhaust port 82/84	Ducted Not ducted as per standard Either:
Pneumatic connection, port 1	Sub-base size 1 to ISO 5599-1
Pneumatic connection, port 2	Sub-base size 1 to ISO 5599-1
Pneumatic connection, port 3	Sub-base size 1 to ISO 5599-1
Pneumatic connection, port 4	Sub-base size 1 to ISO 5599-1
Pneumatic connection, port 5	Sub-base size 1 to ISO 5599-1
Note on materials	RoHS compliant
Material seals	Fluoro rubber HNBR NBR
Material housing	Die-cast aluminium Process automation
Material screws	Steel Galvanised