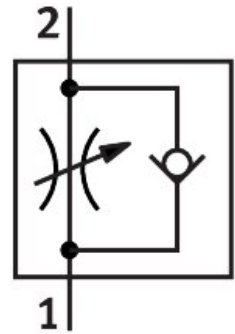


One-way flow control valve GRLA-1/2-QB-3/8-U

Part number: 564846

FESTO



 [General operating condition](#)

Data sheet

Feature	Value
Valve function	Exhaust air one-way flow control function
Pneumatic connection, port 1	QB-3/8
Pneumatic connection, port 2	1/2 NPT
Type of actuation	Manual
Adjustment component	Slotted head screw
Type of mounting	Screw-in Via male thread
Standard nominal flow rate in flow control direction	5313.56 l/min
Standard nominal flow rate in blocked direction	4093.22 l/min ... 5427.966 l/min
Ambient temperature	0 °C ... 60 °C
Mounting position	optional
Symbol	00991452
Operating pressure complete temperature range	-0.951 bar ... 7.998 bar
Standard flow rate in flow control direction 0.6->0 MPa (6->0 bar, 87->0 psi)	7589 l/min
Standard flow rate in non-return direction 0.6->0 MPa (6->0 bar, 87->0 psi)	7588.983 l/min ... 7894.068 l/min
Operating medium	Compressed air to ISO 8573-1:2010 [7:4:4]
Note on operating and pilot medium	Lubricated operation possible (in which case lubricated operation will always be required)
LABS (PWIS) conformity	VDMA24364 zone III
Media temperature	0 °C ... 60 °C
Max. tightening torque	28.065 Nm
Product weight	109.147 g
Material screwed plug	Brass Nickel-plated
Note on materials	RoHS-compliant
Material seals	NBR
Material hollow bolt	Brass Nickel-plated
Material release ring	POM

Feature	Value
Material knurled head	Brass Nickel-plated
Material adjusting screw	Brass Nickel-plated
Material swivel fitting	PBT-reinforced