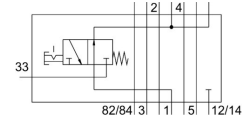
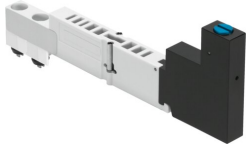


Vertical pressure shut-off plate VMPA1-HS

Part number: 567805

FESTO



 General operating condition

Data sheet

Feature	Value
Construction width	10 mm
Mounting position	optional
Vertical pneumatic linkage	Shut-off for 1
Symbol	00991889
Operating pressure	3 bar ... 8 bar
Standard nominal flow rate ventilation	103 l/min
Standard nominal flow rate for exhaust	213 l/min
Operating medium	Compressed air to ISO 8573-1:2010 [7:4:4]
Note on operating and pilot medium	Lubricated operation possible (in which case lubricated operation will always be required)
Corrosion resistance class CRC	2 - Moderate corrosion stress
LABS (PWIS) conformity	VDMA24364-B1/B2-L
Degree of protection	IP65
Ambient temperature	-5 °C ... 50 °C
Product weight	60 g
Mounting with vertical stacking	On manifold sub-base On individual sub-base
Note on materials	RoHS-compliant
Material housing	Wrought aluminium alloy PA-reinforced