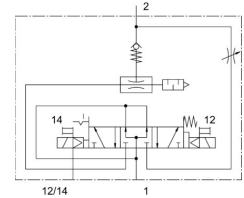
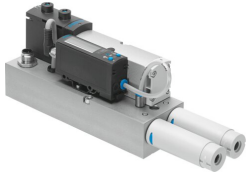



Vacuum block VABF-S4-1-V2B1-C-VH-20

Part number: 571425

FESTO



 General operating condition

Data sheet

Feature	Value
Nominal size, Laval nozzle	2 mm
Silencer design	Open
Reverse polarity protection	For all electrical connections
Mounting position	Any
Ejector characteristic	High vacuum Standard
Manual override	Detenting Non-detenting Concealed
Design	Non-modular
Short circuit current rating	Yes
Measured variable	Relative pressure
Measuring principle	Piezoresistive
Switching function	Threshold value comparator
Integrated function	Ejector pulse valve, electric Flow control On/off valve, electric Air-saving function, electric Check valve Open silencer Vacuum switch
Symbol	00995768
Valve function	5/3-way, pressurised
Switching element function	N/O contact
Setting range hysteresis	-0.9 bar ... 0 bar
Setting range threshold value	-0.999 bar ... 0 bar
Operating pressure	4 bar ... 8 bar
Nominal operating pressure	6 bar
Operational voltage range DC	21.6 V ... 26.4 V
Inductive protective circuit	Adapted to MZ, MY, ME coils
No-load supply current	50 mA ... 150 mA
Max. output current	50 mA
Duty cycle	100%
Voltage drop	≤1.5 V
Characteristic coil data	24 V DC: 1.3 W
Overload protection	Available

Feature	Value
Operating medium	Compressed air to ISO 8573-1:2010 [7:4:4]
Note on operating and pilot medium	Lubricated operation not possible
Corrosion resistance class CRC	0 - No corrosion stress
LABS (PWIS) conformity	VDMA24364 zone III
Media temperature	0 °C ... 50 °C
Sound pressure level	78 dB(A)
Degree of protection	IP65
Ambient temperature	0 °C ... 50 °C
Product weight	1120 g
Pressure measuring range	-1 bar ... 0 bar
Accuracy in ± % FS	3 %FS
Type of mounting	On sub-base
Pneumatic connection, port 1	Sub-base size 26 mm to ISO 15407-2
Pneumatic connection, port 3	Sub-base size 26 mm to ISO 15407-2
Note on materials	RoHS compliant
Material seals	NBR
Material housing	Wrought aluminium alloy
Material screws	Steel Galvanised
Material connector housing	nickel-plated
Material electrical contact	Brass Gold-plated
Material screen	Process automation
Material keypad	TPE-U