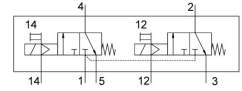


Solenoid valve

VUVS-LT20-T32C-MZD-G18-F7

Part number: 577499

FESTO



 General operating condition

Data sheet

| Feature | Value |
|---|--|
| Valve function | 2x3/2-way, monostable, closed |
| Type of actuation | Electric |
| Valve size | 21 mm |
| Standard nominal flow rate (standardised to DIN 1343) | 600 l/min |
| pneumatic working port | G1/8 |
| Operating pressure | -0.09 MPa ... 1 MPa |
| Operating pressure | -0.9 bar ... 10 bar |
| Design | Poppet seat |
| Type of reset | Mechanical spring |
| Approval | c UL us - Recognized (OL) |
| Nominal size | 5.2 mm |
| Exhaust-air function | With flow control option |
| Sealing principle | Soft |
| Mounting position | optional |
| Manual override | Detenting Non-detenting |
| Type of piloting | Pilot actuated |
| Pilot air supply | External |
| Flow direction | Non-reversible |
| Symbol | 00995863 |
| lap | Underlap |
| Pilot pressure | 0.25 MPa ... 1 MPa |
| Pilot pressure | 2.5 bar ... 10 bar |
| b value | 0.39 |
| C value | 2.3 l/sbar |
| Switching time off | 25 ms |
| Switching time on | 9 ms |
| Max. positive test pulse with 0 signal | 1900 µs |
| Max. negative test pulse with 1 signal | 2700 µs |
| Operating medium | Compressed air to ISO 8573-1:2010 [7:4:4] |
| Note on operating and pilot medium | Lubricated operation possible (in which case lubricated operation will always be required) |
| Vibration resistance | Transport application test with severity level 2 to FN 942017-4 and EN 60068-2-6 |
| Shock resistance | Shock test with severity level 2 to FN 942017-5 and EN 60068-2-27 |
| Corrosion resistance class CRC | 2 - Moderate corrosion stress |

| Feature | Value |
|---|---|
| LABS (PWIS) conformity | VDMA24364-B1/B2-L |
| Cleanroom suitability, measured according to ISO 14644-14 | Class 6 according to ISO 14644-1 |
| Media temperature | -10 °C ... 60 °C |
| Pilot medium | Compressed air to ISO 8573-1:2010 [7:4:4] |
| Ambient temperature | -5 °C ... 60 °C |
| Product weight | 180 g |
| Type of mounting | On manifold rail With through-hole |
| Breather connection | Not ducted |
| Pilot exhaust port 82 | M5 |
| Pilot exhaust port 84 | M5 |
| Pilot air port 12 | M5 |
| Pilot air port 14 | M5 |
| Pneumatic connection, port 1 | 1/8 NPT |
| Pneumatic connection, port 2 | 1/8 NPT |
| Pneumatic connection, port 3 | 1/8 NPT |
| Note on materials | RoHS-compliant |
| Material seals | HNBR NBR TPE-U(PU) |
| Material housing | Die-cast aluminium Painted |
| Material screws | Galvanised steel |