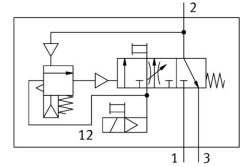


# Soft-start/quick exhaust valve MS6-SV-1/2-C-10V24P

Part number: 589250

FESTO



 General operating condition

## Data sheet

| Feature  | Value  |
|--|--|
| Series   | MS   |
| Size   | 6  |
| Grid dimension   | 62 mm  |
| Safety function  | Exhaust<br>Prevention of unexpected start-up (pressurisation)  |
| Performance Level (PL)   | Exhausting/category 1, performance level c<br>Prevention of unexpected start-up (pressurisation)/category 1, performance level c |
| Note on forced dynamization  | Switching frequency min. 1/month   |
| Design   | Piston gate valve  |
| lap  | Overlap  |
| Type of actuation  | Electric   |
| Pilot air supply   | Internal   |
| Sealing principle  | Soft   |
| Exhaust-air function   | Without flow control option  |
| Manual override  | On pilot solenoid valves: non-detenting, detenting; on soft-start/quick exhaust valve: detenting, self-resetting                 |
| Type of reset  | Mechanical spring  |
| Type of piloting   | Pilot actuated   |
| Symbol   | 00995813   |
| Valve function   | 3/2-way, closed, monostable<br>Soft-start function   |
| Operating pressure   | 0.3 MPa ... 1 MPa  |
| Operating pressure   | 3 bar ... 10 bar   |
| C value  | 23.2 l/sbar  |
| b value  | 0.4  |
| Standard nominal flow rate (standardised to DIN 1343)                | 5700 l/min   |
| Standard nominal flow rate, exhaust 0.6->0 MPa (6->0 bar, 87->0 psi) | 7600 l/min   |
| Switching time off   | 65 ms  |
| Switching time on  | 370 ms   |
| Duty cycle   | 100%   |
| Characteristic coil data   | 24 V DC: 1.8 W   |
| Permissible voltage fluctuations                                     | +/- 10 %   |
| Operating medium   | Compressed air to ISO 8573-1:2010 [7:4:4]  |
| Note on operating and pilot medium                                   | Lubricated operation possible (in which case lubricated operation will always be required)                                       |

| Feature                                      | Value  |
|--|--|
| Corrosion resistance class CRC               | 2 - Moderate corrosion stress  |
| Note on materials                            | RoHS-compliant   |
| LABS (PWIS) conformity                       | VDMA24364-B1/B2-L  |
| Degree of protection                         | IP65<br>With plug socket   |
| Media temperature                            | 0 °C ... 60 °C   |
| Ambient temperature                          | 0 °C ... 60 °C   |
| Storage temperature                          | -10 °C ... 60 °C   |
| Shock resistance                             | Shock test with severity level 2 to FN 942017-5 and EN 60068-2-27                        |
| Vibration resistance                         | Transport application test with severity level 2 to FN 942017-4 and EN 60068-2-6         |
| CE mark (see declaration of conformity)      | To EU EMC Directive<br>To EC Machinery Directive<br>In accordance with EU RoHS Directive |
| UKCA marking (see declaration of conformity) | To UK regulations for machines<br>To UK RoHS instructions                                |
| Suitable for use with food                   | See supplementary material information   |
| Type of mounting                             | Either:<br>In-line installation<br>With accessories                                      |
| Mounting position                            | optional   |
| Product weight                               | 886 g  |
| Pneumatic connection, port 1                 | G1/2   |
| Pneumatic connection, port 2                 | G1/2   |
| Pneumatic connection, port 3                 | G3/4   |
| Electrical connection                        | 4-pin<br>To IEC 61076-2-101  |
| Material housing                             | Die-cast aluminium   |
| Material seals                               | NBR  |
| Material piston rod                          | High-alloy stainless steel   |