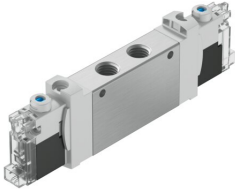


Solenoid valve

VUVG-LK14-B52-T-G18-1H2L-W1-S

FESTO

Part number: 589288



 General operating condition

Data sheet

| Feature | Value |
|---|--|
| Valve function | 5/2 bistable |
| Type of actuation | Electric |
| Valve size | 14 mm |
| Standard nominal flow rate (standardised to DIN 1343) | 660 l/min |
| pneumatic working port | G1/8 |
| Operating voltage | 24V DC |
| Operating pressure | 0.15 MPa ... 0.7 MPa |
| Operating pressure | 1.5 bar ... 7 bar |
| Design | Piston slide with sealing ring |
| Approval | c UL us - Recognized (OL) |
| Certificate issuing authority | UL MH19482 |
| Degree of protection | IP40 |
| Exhaust-air function | With flow control option |
| Sealing principle | Soft |
| Mounting position | optional |
| Manual override | Detenting Non-detenting |
| Type of piloting | Pilot actuated |
| Pilot air supply | Internal |
| Flow direction | Non-reversible |
| Symbol | 00992897 |
| lap | Overlap |
| Signal status display | LED |
| Max. switching frequency | 2 Hz |
| Switching time reversal | 8 ms |
| Duty cycle | 100% |
| Max. positive test pulse with 0 signal | 1600 µs |
| Max. negative test pulse with 1 signal | 3000 µs |
| Characteristic coil data | 24 V DC: 0.8 W |
| Permissible voltage fluctuations | +/- 10 % |
| Operating medium | Compressed air to ISO 8573-1:2010 [7:4:4] |
| Note on operating and pilot medium | Lubricated operation possible (in which case lubricated operation will always be required) |
| Vibration resistance | Transport application test with severity level 1 to FN 942017-4 and EN 60068-2-6 |
| Shock resistance | Shock test with severity level 1 to FN 942017-5 and EN 60068-2-27 |

| Feature | Value |
|--------------------------------|---|
| Corrosion resistance class CRC | 0 - No corrosion stress |
| LABS (PWIS) conformity | VDMA24364 zone III |
| Media temperature | -5 °C ... 50 °C |
| Pilot medium | Compressed air to ISO 8573-1:2010 [7:4:4] |
| Ambient temperature | -5 °C ... 50 °C |
| Product weight | 50 g |
| Electrical connection | 2-pin Plug pattern H, horizontal connection Cable with open end |
| Type of mounting | On manifold rail With through-hole |
| Pneumatic connection, port 2 | G1/8 |
| Pneumatic connection, port 4 | G1/8 |
| Note on materials | RoHS-compliant |
| Material seals | HNBR NBR |
| Material housing | Wrought aluminium alloy |