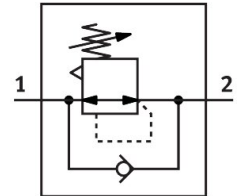



Pressure regulator MS4-LR-1/8-D5-VS-DM1

Part number: 611432

FESTO



 [General operating condition](#)

Data sheet

Feature	Value
Size	4
Series	MS
Actuator lock	Rotary knob with detent
Mounting position	optional
Design	Directly actuated diaphragm regulator
Controller function	Output pressure constant With secondary venting With return flow function
Symbol	00991559
Pressure gauge (ANALOG) or Pressure display (DIGITAL)	Via pressure gauge in the rotary knob
Operating pressure	0.08 MPa ... 1.4 MPa
Operating pressure	0.8 bar ... 14 bar
Pressure regulation range	0.3 bar ... 4 bar
Max. pressure hysteresis	0.04 MPa
Max. pressure hysteresis	0.4 bar
Max. pressure hysteresis	5.8 psi
Standard nominal flow rate (standardised to DIN 1343)	1200 l/min
Operating medium	Compressed air to ISO 8573-1:2010 [7:4:4] Inert gases
Note on operating and pilot medium	Lubricated operation possible (in which case lubricated operation will always be required)
Corrosion resistance class CRC	2 - Moderate corrosion stress
LABS (PWIS) conformity	VDMA24364-B1/B2-L
Storage temperature	-10 °C ... 60 °C
Suitable for use with food	See supplementary material information
Media temperature	-10 °C ... 60 °C
Ambient temperature	-10 °C ... 60 °C
Product weight	225 g
Type of mounting	With accessories
Pneumatic connection, port 1	G1/8
Pneumatic connection, port 2	G1/8
Note on materials	RoHS-compliant
Material sub-base	Die-cast aluminium
Material control panel	PA POM

Feature	Value
Material seals	NBR
Material housing	Die-cast aluminium
Material membrane	NBR