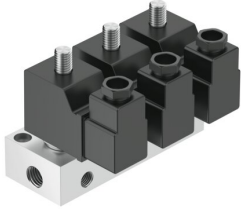


Solenoid valve BMCH-3-3-1/8

Part number: 6687

FESTO



 General operating condition

Data sheet

| Feature | Value |
|---|--|
| Valve function | 3x3/2-way, monostable, closed |
| Type of actuation | Electric |
| Standard nominal flow rate (standardised to DIN 1343) | 160 l/min |
| pneumatic working port | G1/8 |
| Operating pressure | -0.095 MPa ... 0.7 MPa |
| Operating pressure | -0.95 bar ... 7 bar |
| Design | Poppet valve with spring return |
| Type of reset | Mechanical spring |
| Degree of protection | IP65 |
| Nominal size | 2.5 mm |
| Sealing principle | Soft |
| Max. number of valve positions | 3 |
| Type of piloting | Direct |
| Symbol | 00995422 |
| Suitability for vacuum | yes |
| Power consumption, pull | 30 W |
| Power consumption, hold | 22 W |
| Operating medium | Compressed air to ISO 8573-1:2010 [7:4:4] |
| Note on operating and pilot medium | Lubricated operation possible (in which case lubricated operation will always be required) |
| LABS (PWIS) conformity | VDMA24364-B2-L |
| Media temperature | -10 °C ... 60 °C |
| Ambient temperature | -5 °C ... 40 °C |
| Product weight | 1010 g |
| Electrical connection | Plugs |
| Type of mounting | With through-hole |
| Pneumatic connection, port 1 | G1/4 |
| Pneumatic connection, port 2 | G1/8 |
| Pneumatic connection, port 3 | G1/8 |
| Material housing | Aluminium |