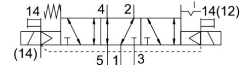


# Solenoid valve VSVA-B-P53AD-ZD-A2-1T1L

Part number: 8031815

FESTO



 [General operating condition](#)

## Data sheet

Feature	Value
Valve function	5/3-way, port 2 pressurised, 4 exhausted
Type of actuation	Electric
Construction width	18 mm
Standard nominal flow rate (standardised to DIN 1343)	380 l/min
pneumatic working port	Sub-base size 18 mm to ISO 15407-1 G1/8
Operating voltage	24V DC
Operating pressure	-0.09 MPa ... 1 MPa
Operating pressure	-0.9 bar ... 10 bar
Design	Piston gate valve
Type of reset	Mechanical spring Electrical actuation
Degree of protection	IP65 NEMA 4
Nominal size	5 mm
Exhaust-air function	With flow control option Via throttle plate Via individual sub-base
Sealing principle	Soft
Mounting position	optional
Manual override	Detenting Non-detenting
Type of piloting	Pilot actuated
Pilot air supply	External
Flow direction	optional
Symbol	00992252
lap	Underlap
Signal status display	LED
Pilot pressure	0.3 MPa ... 1 MPa
Pilot pressure	3 bar ... 10 bar
Flow rate of valve on individual sub-base	380 l/min
Valve flow rate, pneumatically linked, flow optimized	440 l/min
Flow rate of pneumatically interlinked valve	380 l/min
Non symmetrical switching time off	28 ms for control side 12
Non symmetrical switching time on	12 ms for control side 12 9 ms for control side 14
Duty cycle	100%
Max. positive test pulse with 0 signal	1500 µs

Feature	Value
Max. negative test pulse with 1 signal	800 µs
Nominal operating voltage DC	24 V
Characteristic coil data	24 V DC: 1.6 W
Immunity to surge	2.5 kV
Pollution degree	3
Permissible voltage fluctuations	+/- 10 %
Operating medium	Compressed air to ISO 8573-1:2010 [7:4:4]
Note on operating and pilot medium	Lubricated operation possible (in which case lubricated operation will always be required)
Vibration resistance	Transport application test with severity level 2 to FN 942017-4 and EN 60068-2-6
Shock resistance	Shock test with severity level 2 to FN 942017-5 and EN 60068-2-27
Corrosion resistance class CRC	0 - No corrosion stress
LABS (PWIS) conformity	VDMA24364-B1/B2-L
Media temperature	-5 °C ... 50 °C
Relative air humidity	0 - 90%
Sound pressure level	85 dB(A)
Ambient temperature	-5 °C ... 50 °C
Max. tightening torque for valve mounting	0.8 Nm ... 1.2 Nm
Product weight	172 g
Electrical connection	4-pin Plugs To ISO 15407-2
Type of mounting	On sub-base
Pilot air port 12/14	Sub-base size 18 mm to ISO 15407-2
Pilot exhaust port 82/84	Ducted Not ducted Either:
Pneumatic connection, port 1	Sub-base size 18 mm to ISO 15407-2
Pneumatic connection, port 2	Sub-base size 18 mm to ISO 15407-2
Pneumatic connection, port 3	Sub-base size 18 mm to ISO 15407-2
Pneumatic connection, port 4	Sub-base size 18 mm to ISO 15407-2
Pneumatic connection, port 5	Sub-base size 18 mm to ISO 15407-2
Note on materials	RoHS-compliant
Material seals	FPM NBR
Material housing	Die-cast aluminium PA
Material screws	Galvanised steel