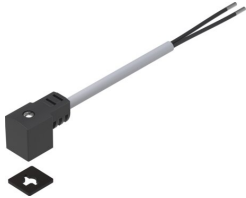


# Connecting cable NEBV-C1SW2L-P-K-2.5-N-LE2-S9

Part number: 8032623

FESTO



 General operating condition

## Data sheet

| Feature  | Value                                    |
|--|--|
| Signal status display                                | Yellow LED                               |
| Additional functions                                 | Protective circuit                       |
| Cable designation                                    | Without inscription label holder         |
| Frequency of connection                              | 50                                       |
| Product weight                                       | 120 g                                    |
| Electrical connection 1, function                    | Field device side                        |
| Electrical connection 1, design                      | Angular                                  |
| Electrical connection 1, connection type             | Socket, narrow                           |
| Electrical connection 1, cable outlet                | Angled                                   |
| Electrical connection 1, note on cable outlet        | 180° rotatable                           |
| Electrical connection 1, connector system            | Plug pattern type C to EN 175301-803     |
| Electrical connection 1, number of connections/cores | 4  |
| Electrical connection 1, used connections/cores      | 2  |
| Electrical connection 1, type of mounting            | On solenoid valve via M2.5 central screw |
| Electrical connection 1, connection pattern          | 00995797                                 |
| Electrical connection 2, function                    | Controller side                          |
| Electrical connection 2, connection type             | Cable                                    |
| Electrical connection 2, connector system            | Open end                                 |
| Electrical connection 2, number of connections/cores | 2  |
| Electrical connection 2, used connections/cores      | 2  |
| Operational voltage range DC                         | 20.4 V ... 26.4 V                        |
| Nominal operating voltage DC                         | 24 V                                     |
| Current rating at 40° C                              | 6 A                                      |
| Immunity to surge                                    | 2.4 kV                                   |
| Reverse polarity protection                          | Bipolar                                  |
| Protective conductor connection                      | Not available                            |
| Cable length   | 2.5 m                                    |
| Cable characteristic                                 | Standard                                 |
| Test conditions cable                                | Test conditions on request               |
| Bending radius, moving cable                         | ≥52 mm                                   |
| Cable diameter                                       | 5.2 mm                                   |
| Cable diameter tolerance                             | ± 0.1 mm                                 |
| Cable structure                                      | 2 x 0.75 mm <sup>2</sup>                 |
| Nominal cross section conductor                      | 0.75 mm <sup>2</sup>                     |
| Degree of protection                                 | IP65<br>IP67                             |

| <b>Feature</b>                               | <b>Value</b>                         |
|--|--------------------------------------|
| Note on degree of protection                 | In assembled state                   |
| Ambient temperature                          | -20 °C ... 70 °C                     |
| Ambient temperature with moving cable        | -5 °C ... 70 °C                      |
| CE mark (see declaration of conformity)      | In accordance with EU RoHS Directive |
| UKCA marking (see declaration of conformity) | To UK RoHS instructions              |
| LABS (PWIS) conformity                       | VDMA24364-B2-L                       |
| Note on materials                            | RoHS-compliant                       |
| Pollution degree                             | 3                                    |
| Note on the contamination level              | In mounted state                     |
| Corrosion resistance class CRC               | 3 - high corrosion stress            |
| Material cable sheath                        | PVC                                  |
| Cable sheath colour                          | Grey                                 |
| Material housing                             | TPE-U(PU)                            |
| Housing colour                               | Black                                |
| Material screws                              | Stainless steel                      |
| Material seals                               | HNBR                                 |
| Material electrical contact                  | Copper alloy, tin-plated             |
| Material insulating sheath                   | PVC                                  |