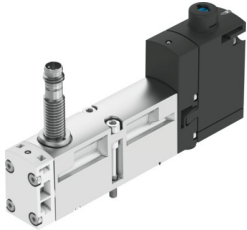


Solenoid valve

VSVA-B-M52-MZTR-A2-1T1L-APX-0.5

Part number: 8033459

FESTO



[PDF General operating condition](#)

Data sheet

| Feature | Value |
|---|---|
| Valve function | 5/2-way, single solenoid |
| Type of actuation | Electrical |
| Construction width | 18 mm |
| Standard nominal flow rate (standardised to DIN 1343) | 550 l/min |
| pneumatic working port | Sub-base size 18 mm to ISO 15407-2 G1/8 |
| Operating pressure | -0.09 MPa ... 1 MPa |
| Operating pressure | -0.9 bar ... 10 bar |
| Design | Piston gate valve |
| Type of reset | Mechanical spring |
| KC mark | KC-EMV |
| CE mark (see declaration of conformity) | To EU EMC Directive |
| Degree of protection | IP65 NEMA 4 |
| Nominal size | 5 mm |
| Exhaust-air function | Can be throttled Via throttle plate Via individual sub-base |
| Sealing principle | Soft |
| Mounting position | Any |
| Manual override | Detenting via accessory Non-detenting |
| Type of piloting | Piloted |
| Pilot air supply | External |
| Flow direction | Non-reversible |
| Symbol | 00997392 |
| Measuring principle | Inductive |
| lap | Overlap |
| Reverse polarity protection sensor | For all electrical connections |
| Signal status display | LED |
| Switching position sensing | Normal position with sensor |
| Switching status display sensor | LED |
| Pilot pressure | 0.3 MPa ... 1 MPa |
| Pilot pressure | 3 bar ... 10 bar |
| Flow rate of valve | 750 l/min |
| Flow rate of valve on individual sub-base | 600 l/min |
| Valve flow rate, pneumatically linked, flow optimized | 700 l/min |

| Feature | Value |
|--|--|
| Flow rate of pneumatically interlinked valve | 550 l/min |
| Switching time off | 38 ms |
| Switching time on | 12 ms |
| Valve - sensor switching time on | 32 ms |
| Valve - sensor switching time off | 9 ms |
| Duty cycle | 100% |
| Max. positive test pulse with 0 signal | 1500 µs |
| Max. negative test pulse with 1 signal | 800 µs |
| Nominal operating voltage DC | 24 V |
| Switching output | PNP |
| Characteristic coil data | 24 V DC: 1.6 W |
| Immunity to surge | 2.5 kV |
| Pollution degree | 3 |
| Permissible voltage fluctuations | +/-10% |
| Operating medium | Compressed air to ISO 8573-1:2010 [7:4:4] |
| Note on operating and pilot medium | Lubricated operation possible (in which case lubricated operation will always be required) |
| Vibration resistance | Transport application test with severity level 2 to FN 942017-4 and EN 60068-2-6 |
| Shock resistance | Shock test with severity level 2 to FN 942017-5 and EN 60068-2-27 |
| Corrosion resistance class CRC | 0 - No corrosion stress |
| LABS (PWIS) conformity | VDMA24364-B1/B2-L |
| Media temperature | -5 °C ... 50 °C |
| Relative air humidity | 0 - 90% |
| Sound pressure level | 85 dB(A) |
| Ambient temperature | -5 °C ... 50 °C |
| Max. tightening torque for valve mounting | 0.8 Nm ... 1.2 Nm |
| Product weight | 157 g |
| Operating voltage range, DC sensor | 10 V ... 30 V |
| Short-circuit strength sensor | Pulsed |
| Idle current sensor | ≤10 mA |
| Max. output current sensor | 200 mA |
| Max. switching frequency sensor | 5000 Hz |
| Residual ripple sensor | ±10% |
| Voltage drop sensor | ≤2 V |
| Electrical connection | 4-pin Plug To ISO 15407-2 |
| Sensor connection | Plug Cable 4-pin M12x1 0.5 m |
| Type of mounting | On sub-base |
| Pilot air port 12/14 | Sub-base size 18 mm to ISO 15407-2 |
| Pilot exhaust port 82/84 | Ducted Not ducted Either: |
| Pneumatic connection, port 1 | Sub-base size 18 mm to ISO 15407-2 |
| Pneumatic connection, port 2 | Sub-base size 18 mm to ISO 15407-2 |
| Pneumatic connection, port 3 | Sub-base size 18 mm to ISO 15407-2 |
| Pneumatic connection, port 4 | Sub-base size 18 mm to ISO 15407-2 |
| Pneumatic connection, port 5 | Sub-base size 18 mm to ISO 15407-2 |
| Note on materials | RoHS compliant |
| Material seals | Fluoro rubber NBR |

| Feature | Value |
|----------------------------|--|
| Material housing | Die-cast aluminium Process automation |
| Material screws | Galvanised steel |
| Switching element function | N/C contact |