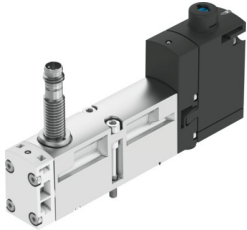


Solenoid valve

VSVA-B-M52-MZTR-A2-1T1L-APP

Part number: 8033460

FESTO



[PDF General operating condition](#)

Data sheet

Feature	Value
Valve function	5/2-way, monostable
Type of actuation	Electric
Construction width	18 mm
Standard nominal flow rate (standardised to DIN 1343)	550 l/min
pneumatic working port	Sub-base size 18 mm to ISO 15407-2 G1/8
Operating pressure	-0.09 MPa ... 1 MPa
Operating pressure	-0.9 bar ... 10 bar
Design	Piston gate valve
Type of reset	Mechanical spring
KC mark	KC-EMV
CE mark (see declaration of conformity)	To EU EMC Directive
Degree of protection	IP65 NEMA 4
Nominal size	5 mm
Exhaust-air function	With flow control option Via throttle plate Via individual sub-base
Sealing principle	Soft
Mounting position	optional
Manual override	Detenting via accessory Non-detenting
Type of piloting	Pilot actuated
Pilot air supply	External
Flow direction	Non-reversible
Symbol	00997392
Measuring principle	Inductive
lap	Overlap
Reverse polarity protection sensor	For all electrical connections
Signal status display	LED
Switching position sensing	Normal position via sensor
Switching status display sensor	LED
Pilot pressure	0.3 MPa ... 1 MPa
Pilot pressure	3 bar ... 10 bar
Flow rate of valve	750 l/min
Flow rate of valve on individual sub-base	600 l/min
Valve flow rate, pneumatically linked, flow optimized	700 l/min

Feature	Value
Flow rate of pneumatically interlinked valve	550 l/min
Switching time off	38 ms
Switching time on	12 ms
Valve - sensor switching time on	32 ms
Valve - sensor switching time off	9 ms
Duty cycle	100%
Max. positive test pulse with 0 signal	1500 µs
Max. negative test pulse with 1 signal	800 µs
Nominal operating voltage DC	24 V
Switching output	PNP
Characteristic coil data	24 V DC: 1.6 W
Immunity to surge	2.5 kV
Pollution degree	3
Permissible voltage fluctuations	+/- 10 %
Operating medium	Compressed air to ISO 8573-1:2010 [7:4:4]
Note on operating and pilot medium	Lubricated operation possible (in which case lubricated operation will always be required)
Vibration resistance	Transport application test with severity level 2 to FN 942017-4 and EN 60068-2-6
Shock resistance	Shock test with severity level 2 to FN 942017-5 and EN 60068-2-27
Corrosion resistance class CRC	0 - No corrosion stress
LABS (PWIS) conformity	VDMA24364-B1/B2-L
Media temperature	-5 °C ... 50 °C
Relative air humidity	0 - 90%
Sound pressure level	85 dB(A)
Ambient temperature	-5 °C ... 50 °C
Max. tightening torque for valve mounting	0.8 Nm ... 1.2 Nm
Product weight	140 g
Operating voltage range, DC sensor	10 V ... 30 V
Short-circuit strength sensor	Pulsed
Idle current sensor	≤10 mA
Max. output current sensor	200 mA
Max. switching frequency sensor	5000 Hz
Residual ripple sensor	± 10%
Voltage drop sensor	≤2 V
Electrical connection	4-pin Plugs To ISO 15407-2
Sensor connection	Plug 3-pin M8x1
Type of mounting	On sub-base
Pilot air port 12/14	Sub-base size 18 mm to ISO 15407-2
Pilot exhaust port 82/84	Ducted Not ducted Either:
Pneumatic connection, port 1	Sub-base size 18 mm to ISO 15407-2
Pneumatic connection, port 2	Sub-base size 18 mm to ISO 15407-2
Pneumatic connection, port 3	Sub-base size 18 mm to ISO 15407-2
Pneumatic connection, port 4	Sub-base size 18 mm to ISO 15407-2
Pneumatic connection, port 5	Sub-base size 18 mm to ISO 15407-2
Note on materials	RoHS-compliant
Material seals	FPM NBR
Material housing	Die-cast aluminium PA

Feature	Value
Material screws	Galvanised steel
Switching element function	N/C contact