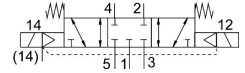


Solenoid valve VSVA-B-P53C-Z-D1-1T1L

Part number: 8034842

FESTO



 [General operating condition](#)

Data sheet

Feature	Value
Valve function	5/3 closed
Type of actuation	Electric
Construction width	42 mm
Standard nominal flow rate (standardised to DIN 1343)	1200 l/min
pneumatic working port	Sub-base size 1 to ISO 5599-2 G3/8
Operating voltage	24V DC
Operating pressure	-0.09 MPa ... 1 MPa
Operating pressure	-0.9 bar ... 10 bar
Design	Piston gate valve
Approval	c UL us - Recognized (OL)
Degree of protection	IP65 NEMA 4
Exhaust-air function	With flow control option Via throttle plate Via individual sub-base
Sealing principle	Soft
Mounting position	optional
Manual override	Covered
Type of piloting	Pilot actuated
Pilot air supply	External
Flow direction	optional
Symbol	00992992
Signal status display	LED
Pilot pressure	0.3 MPa ... 1 MPa
Pilot pressure	3 bar ... 10 bar
Flow rate of valve	1700 l/min
Flow rate of valve on individual sub-base	1400 l/min
Valve flow rate, pneumatically linked, flow optimized	1690 l/min
Flow rate of pneumatically interlinked valve	1200 l/min
Switching time off	65 ms
Switching time on	22 ms
Max. positive test pulse with 0 signal	1400 µs
Max. negative test pulse with 1 signal	900 µs
Nominal pick-up current per solenoid coil	72 mA to 30 ms
Characteristic coil data	24 V DC: 1.6 W
Immunity to surge	2.5 kV

Feature	Value
Pollution degree	3
Permissible voltage fluctuations	+/- 10 %
Operating medium	Compressed air to ISO 8573-1:2010 [7:4:4]
Note on operating and pilot medium	Lubricated operation possible (in which case lubricated operation will always be required)
Vibration resistance	Transport application test with severity level 2 to FN 942017-4 and EN 60068-2-6
Shock resistance	Shock test with severity level 2 to FN 942017-5 and EN 60068-2-27
Corrosion resistance class CRC	0 - No corrosion stress
LABS (PWIS) conformity	VDMA24364-B1/B2-L
Relative air humidity	0 - 90%
Ambient temperature	-5 °C ... 50 °C
Product weight	456 g
Electrical connection	Plug-in To ISO 5599-2
Type of mounting	On sub-base
Pilot air port 12/14	Sub-base size 1 to ISO 5599-2
Pilot exhaust port 82/84	Ducted Not ducted as per standard Either:
Pneumatic connection, port 1	Sub-base size 1 to ISO 5599-2
Pneumatic connection, port 2	Sub-base size 1 to ISO 5599-2
Pneumatic connection, port 3	Sub-base size 1 to ISO 5599-2
Pneumatic connection, port 4	Sub-base size 1 to ISO 5599-2
Pneumatic connection, port 5	Sub-base size 1 to ISO 5599-2
Note on materials	RoHS-compliant
Material seals	FPM HNBR NBR
Material housing	Die-cast aluminium PA
Material screws	Galvanised steel