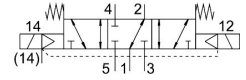


# Solenoid valve VSVA-B-P53F-Z-D2-1T1L

Part number: 8034998

FESTO



[PDF](#) General operating condition

## Data sheet

| Feature   | Value   |
|---|---|
| Valve function  | 5/3-way, pressurised 1 to 2, 4 to 5 closed                                |
| Type of actuation                                     | Electric  |
| Construction width                                    | 52 mm   |
| Standard nominal flow rate (standardised to DIN 1343) | 2300 l/min  |
| pneumatic working port                                | Sub-base size 2 to ISO 5599-2<br>G1/2                                     |
| Operating voltage                                     | 24V DC  |
| Operating pressure                                    | -0.09 MPa ... 1 MPa   |
| Operating pressure                                    | -0.9 bar ... 10 bar   |
| Design  | Piston gate valve   |
| Approval  | c UL us - Recognized (OL)   |
| KC mark   | KC-EMV  |
| CE mark (see declaration of conformity)               | To EU EMC Directive   |
| Degree of protection                                  | IP65<br>NEMA 4  |
| Grid dimension  | 59 mm   |
| Exhaust-air function                                  | With flow control option<br>Via throttle plate<br>Via individual sub-base |
| Sealing principle                                     | Soft  |
| Mounting position                                     | optional  |
| Conforms to standard                                  | ISO 5599-2  |
| Manual override                                       | Covered   |
| Type of piloting                                      | Pilot actuated  |
| Pilot air supply                                      | External  |
| Flow direction  | optional  |
| Symbol  | 00995436  |
| Signal status display                                 | LED   |
| Pilot pressure  | 0.3 MPa ... 1 MPa   |
| Pilot pressure  | 3 bar ... 10 bar  |
| Flow rate of valve                                    | 3000 l/min  |
| Flow rate of valve on individual sub-base             | 2600 l/min  |
| Flow rate of pneumatically interlinked valve          | 2300 l/min  |
| Switching time off                                    | 60 ms   |
| Switching time on                                     | 23 ms   |
| Duty cycle  | 100%  |
| Nominal pick-up current per solenoid coil             | 165 mA up to 30 ms  |

| Feature                                | Value  |
|--|--|
| Nominal current with current reduction | 35 mA after 30 ms  |
| Characteristic coil data               | 24 V DC: 4.6 W   |
| Immunity to surge                      | 2.5 kV   |
| Pollution degree                       | 3  |
| Permissible voltage fluctuations       | +/- 10 %   |
| Operating medium                       | Compressed air to ISO 8573-1:2010 [7:4:4]  |
| Note on operating and pilot medium     | Lubricated operation possible (in which case lubricated operation will always be required) |
| Corrosion resistance class CRC         | 0 - No corrosion stress  |
| LABS (PWIS) conformity                 | VDMA24364-B1/B2-L  |
| Media temperature                      | -5 °C ... 50 °C  |
| Relative air humidity                  | 0 - 90%  |
| Ambient temperature                    | -5 °C ... 50 °C  |
| Product weight                         | 780 g  |
| Electrical connection                  | Plug-in<br>To ISO 5599-2   |
| Type of mounting                       | On sub-base  |
| Pilot air port 12/14                   | Sub-base size 2 to ISO 5599-2  |
| Pilot exhaust port 82/84               | Ducted<br>Not ducted as per standard<br>Either:  |
| Pneumatic connection, port 1           | Sub-base size 2 to ISO 5599-2  |
| Pneumatic connection, port 2           | Sub-base size 2 to ISO 5599-2  |
| Pneumatic connection, port 3           | Sub-base size 2 to ISO 5599-2  |
| Pneumatic connection, port 4           | Sub-base size 2 to ISO 5599-2  |
| Pneumatic connection, port 5           | Sub-base size 2 to ISO 5599-2  |
| Note on materials                      | RoHS-compliant   |
| Material seals                         | FPM<br>HNBR<br>NBR   |
| Material housing                       | Die-cast aluminium<br>PA   |
| Material screws                        | Galvanised steel   |