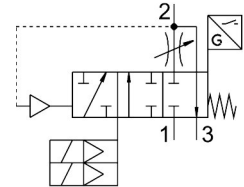


Soft start/quick exhaust valve MS6-SV-1/2-D-10V24-2M8-SO-AG

Part number: 8038490

FESTO



[PDF General operating condition](#)

Data sheet

Feature	Value
Series	MS
Size	6
Grid dimension	62 mm
Safety function	Exhaust Prevention of unexpected start-up (pressurisation)
Safety Integrity Level (SIL)	Exhaust/SIL 3 Prevention of unexpected start-up (pressurisation)/SIL 3
Performance Level (PL)	Exhaust/category 3, performance level d Prevention of unexpected start-up (pressurisation)/category 3, performance level d
Note on forced dynamization	Switching frequency min. 1/month
Design	Piston seat
lap	Underlap
Type of actuation	Electric
Pilot air supply	Internal
Sealing principle	Soft
Exhaust-air function	Without flow control option
Position detection principle	Magnetic piston principle
Conforms to standard	DIN EN ISO 13849-1 DIN EN ISO 13849-2
Manual override	None
Type of reset	Mechanical spring
Type of piloting	Pilot actuated
Symbol	00995704
Valve function	3/2-way, closed, monostable Soft-start function
Operating pressure	0.35 MPa ... 1 MPa
Operating pressure	3.5 bar ... 10 bar
Pressure gauge (ANALOG) or Pressure display (DIGITAL)	With pressure gauge
C value	19.3 l/sbar
b value	0.21
Standard nominal flow rate (standardised to DIN 1343)	4300 l/min
Standard nominal flow rate, exhaust 0.6->0 MPa (6->0 bar, 87->0 psi)	9000 l/min
Max. switching frequency	0.5 Hz
Switching time off	40 ms
Switching time on	130 ms

Feature	Value
Duty cycle	100%
Signal status display	LED Switching outputs
Characteristic coil data	24 V DC: 1.8 W
Nominal operating voltage DC	24 V
Permissible voltage fluctuations	+10%/-15%
Operating medium	Compressed air to ISO 8573-1:2010 [7:4:4]
Note on operating and pilot medium	Lubricated operation possible (in which case lubricated operation will always be required)
Corrosion resistance class CRC	2 - Moderate corrosion stress
Note on materials	RoHS-compliant
LABS (PWIS) conformity	VDMA24364-B1/B2-L
Sound pressure level	75 dB(A)
Degree of protection	IP65 With plug socket
Media temperature	-10 °C ... 50 °C
Ambient temperature	-10 °C ... 50 °C
Storage temperature	-10 °C ... 50 °C
Shock resistance	Shock test with severity level 2 to FN 942017-5 and EN 60068-2-27
Vibration resistance	Transport application test with severity level 2 to FN 942017-4 and EN 60068-2-6
Approval	RCM trademark
KC mark	KC-EMV
CE mark (see declaration of conformity)	To EU EMC Directive To EC Machinery Directive In accordance with EU RoHS Directive
UKCA marking (see declaration of conformity)	To UK regulations for machines To UK RoHS instructions
Type of mounting	Either: In-line installation With accessories
Mounting position	optional
Product weight	2110 g
Pneumatic connection, port 1	G1/2
Pneumatic connection, port 2	G1/2
Pneumatic connection, port 3	G1
Electrical connection	2-pin 2x plug connector Type C To EN 175301-803
Electrical connection, proximity switch	2x cable with plug connector 3-pin M8 Rotatable thread
Material housing	Die-cast aluminium
Material seals	NBR
Material piston rod	High-alloy stainless steel