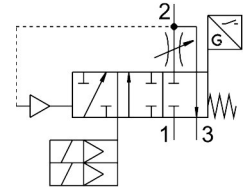


Soft start/quick exhaust valve MS6-SV-1/2-D-10V24-20E-SO-AG

Part number: 8038492

FESTO



[PDF General operating condition](#)

Data sheet

| Feature | Value |
|--|---|
| Series | MS |
| Size | 6 |
| Grid dimension | 62 mm |
| Safety function | Exhaust Prevention of unexpected start-up (pressurisation) |
| Safety Integrity Level (SIL) | Exhaust/SIL 3 Prevention of unexpected start-up (pressurisation)/SIL 3 |
| Performance Level (PL) | Exhaust/category 3, performance level d Prevention of unexpected start-up (pressurisation)/category 3, performance level d |
| Note on forced dynamization | Switching frequency min. 1/month |
| Design | Piston seat |
| lap | Underlap |
| Type of actuation | Electric |
| Pilot air supply | Internal |
| Sealing principle | Soft |
| Exhaust-air function | Without flow control option |
| Position detection principle | Magnetic piston principle |
| Conforms to standard | DIN EN ISO 13849-1 DIN EN ISO 13849-2 |
| Manual override | None |
| Type of reset | Mechanical spring |
| Type of piloting | Pilot actuated |
| Symbol | 00995704 |
| Valve function | 3/2-way, closed, monostable Soft-start function |
| Operating pressure | 0.35 MPa ... 1 MPa |
| Operating pressure | 3.5 bar ... 10 bar |
| Pressure gauge (ANALOG) or Pressure display (DIGITAL) | With pressure gauge |
| C value | 19.3 l/sbar |
| b value | 0.21 |
| Standard nominal flow rate (standardised to DIN 1343) | 4300 l/min |
| Standard nominal flow rate, exhaust 0.6->0 MPa (6->0 bar, 87->0 psi) | 9000 l/min |
| Max. switching frequency | 0.5 Hz |
| Switching time off | 40 ms |
| Switching time on | 130 ms |

| Feature | Value |
|--|--|
| Duty cycle | 100% |
| Signal status display | LED Switching outputs |
| Characteristic coil data | 24 V DC: 1.8 W |
| Nominal operating voltage DC | 24 V |
| Permissible voltage fluctuations | +10%/-15% |
| Operating medium | Compressed air to ISO 8573-1:2010 [7:4:4] |
| Note on operating and pilot medium | Lubricated operation possible (in which case lubricated operation will always be required) |
| Corrosion resistance class CRC | 2 - Moderate corrosion stress |
| Note on materials | RoHS-compliant |
| LABS (PWIS) conformity | VDMA24364-B1/B2-L |
| Sound pressure level | 75 dB(A) |
| Degree of protection | IP65 With plug socket |
| Media temperature | -10 °C ... 50 °C |
| Ambient temperature | -10 °C ... 50 °C |
| Storage temperature | -10 °C ... 50 °C |
| Shock resistance | Shock test with severity level 2 to FN 942017-5 and EN 60068-2-27 |
| Vibration resistance | Transport application test with severity level 2 to FN 942017-4 and EN 60068-2-6 |
| Approval | RCM trademark |
| KC mark | KC-EMV |
| CE mark (see declaration of conformity) | To EU EMC Directive To EC Machinery Directive In accordance with EU RoHS Directive |
| UKCA marking (see declaration of conformity) | To UK regulations for machines To UK RoHS instructions |
| Type of mounting | Either: In-line installation With accessories |
| Mounting position | optional |
| Product weight | 1900 g |
| Pneumatic connection, port 1 | G1/2 |
| Pneumatic connection, port 2 | G1/2 |
| Pneumatic connection, port 3 | G1 |
| Electrical connection | 2-pin 2x plug connector Type C To EN 175301-803 |
| Electrical connection, proximity switch | 2x cable 3-wire |
| Material housing | Die-cast aluminium |
| Material seals | NBR |
| Material piston rod | High-alloy stainless steel |