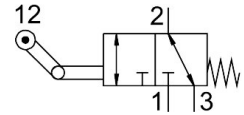


# Roller lever valve VMEF-KT-M32-M-N18

Part number: 8047105

FESTO



General operating condition

## Data sheet

| Feature   | Value  |
|---|--|
| Valve function  | 3/2-way, monostable  |
| Type of actuation                                     | Mechanical   |
| Construction width                                    | 20 mm  |
| Standard nominal flow rate (standardised to DIN 1343) | 750 l/min  |
| pneumatic working port                                | 1/8 NPT  |
| Operating pressure                                    | -0.095 MPa ... 1 MPa   |
| Operating pressure                                    | -0.95 bar ... 10 bar   |
| Design  | One-way roller lever with idle return<br>Poppet seat                                       |
| Type of reset   | Mechanical spring  |
| Max. stroke limit (hard)                              | 11 mm  |
| Nominal size  | 5.6 mm   |
| Instructions on use                                   | Risk of pinching   |
| Sealing principle                                     | Soft   |
| Mounting position                                     | optional   |
| Type of piloting                                      | Direct   |
| Flow direction  | Reversible   |
| Symbol  | 00991348   |
| lap   | Zero overlap   |
| Max. actuating speed with lateral actuation           | 0.7 m/s  |
| Max. switching frequency                              | 3 Hz   |
| Cam angle   | 30 deg   |
| Explosion protection                                  | Zone 1 (ATEX)<br>Zone 2 (ATEX)<br>Zone 21 (ATEX)<br>Zone 22 (ATEX)                         |
| Operating medium                                      | Compressed air to ISO 8573-1:2010 [7:-:-]  |
| Note on operating and pilot medium                    | Lubricated operation possible (in which case lubricated operation will always be required) |
| Corrosion resistance class CRC                        | 1 - Low corrosion stress   |
| LABS (PWIS) conformity                                | VDMA24364-B1/B2-L  |
| Media temperature                                     | -10 °C ... 60 °C   |
| Ambient temperature                                   | -10 °C ... 60 °C   |
| Note on ambient temperature                           | Influence of heat on wear  |
| Actuating force                                       | 32.7 N   |
| Product weight  | 227 g  |
| Type of mounting                                      | With through-hole  |

| <b>Feature</b>               | <b>Value</b>                     |
|------------------------------|----------------------------------|
| Pneumatic connection, port 1 | 1/8 NPT                          |
| Pneumatic connection, port 2 | 1/8 NPT                          |
| Pneumatic connection, port 3 | 1/8 NPT                          |
| Note on materials            | RoHS-compliant                   |
| Material mounting adaptor    | Galvanised steel                 |
| Material seals               | NBR                              |
| Material housing             | Anodised wrought aluminium alloy |