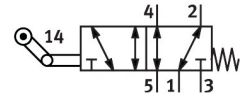


Roller lever valve VMEF-K-M52-M-N14

Part number: 8047106

FESTO



[General operating condition](#)

Data sheet

| Feature | Value |
|---|--|
| Valve function | 5/2-way, monostable |
| Type of actuation | Mechanical |
| Construction width | 20 mm |
| Standard nominal flow rate (standardised to DIN 1343) | 1200 l/min |
| pneumatic working port | 1/4 NPT |
| Operating pressure | -0.095 MPa ... 1 MPa |
| Operating pressure | -0.95 bar ... 10 bar |
| Design | One-way roller lever with idle return Piston gate valve |
| Type of reset | Mechanical spring |
| Max. stroke limit (hard) | 11.8 mm |
| Nominal size | 7 mm |
| Instructions on use | Risk of pinching |
| Sealing principle | Soft |
| Mounting position | optional |
| Type of piloting | Direct |
| Flow direction | Reversible |
| Symbol | 00992208 |
| lap | Overlap |
| Max. actuating speed with lateral actuation | 0.7 m/s |
| Max. switching frequency | 3 Hz |
| Cam angle | 30 deg |
| Explosion protection | Zone 1 (ATEX) Zone 2 (ATEX) Zone 21 (ATEX) Zone 22 (ATEX) |
| Operating medium | Compressed air to ISO 8573-1:2010 [7:-:-] |
| Note on operating and pilot medium | Lubricated operation possible (in which case lubricated operation will always be required) |
| Corrosion resistance class CRC | 1 - Low corrosion stress |
| LABS (PWIS) conformity | VDMA24364-B1/B2-L |
| Media temperature | -10 °C ... 60 °C |
| Ambient temperature | -10 °C ... 60 °C |
| Note on ambient temperature | Influence of heat on wear |
| Actuating force | 23.5 N |
| Product weight | 286 g |
| Type of mounting | With through-hole |

| Feature | Value |
|------------------------------|----------------------------------|
| Pneumatic connection, port 1 | 1/4 NPT |
| Pneumatic connection, port 2 | 1/4 NPT |
| Pneumatic connection, port 3 | 1/4 NPT |
| Pneumatic connection, port 4 | 1/4 NPT |
| Pneumatic connection, port 5 | 1/4 NPT |
| Note on materials | RoHS-compliant |
| Material mounting adaptor | Galvanised steel |
| Material cover | PA-reinforced |
| Material seals | NBR |
| Material housing | Anodised wrought aluminium alloy |