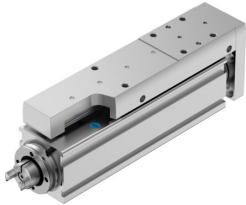


# Mini slide EGSC-BS-KF-25-50-6P

Part number: 8048311

FESTO



 [General operating condition](#)

## Data sheet

| Feature   | Value  |
|---|--|
| Working stroke  | 50 mm  |
| Size  | 25   |
| Stroke reserve  | 0 mm   |
| Reversing backlash theoretical                            | 150 µm   |
| Spindle diameter  | 6 mm   |
| Spindle pitch   | 6 mm/U   |
| Mounting position   | Any  |
| Guide   | Recirculating ball bearing guide   |
| Design  | With ball screw  |
| Type of motor   | Stepper motor<br>Servo motor   |
| Referencing   | Positive fixed stop block<br>Negative fixed stop block<br>Reference switch |
| Spindle type  | Ball screw   |
| Symbol  | 00992069   |
| Position detection  | Via proximity switch   |
| Max. acceleration   | 15 m/s <sup>2</sup>  |
| Max. rotational speed                                     | 4000 rpm   |
| Max. speed  | 0.4 m/s  |
| Repetition accuracy                                       | ±0.015 mm  |
| Duty cycle  | 100%   |
| Corrosion resistance class CRC                            | 0 - No corrosion stress  |
| LABS (PWIS) conformity                                    | VDMA24364 zone III   |
| Suitability for the production of Li-ion batteries        | Suitable for battery production with reduced Cu/Zn/Ni values (F1a)         |
| Cleanroom suitability, measured according to ISO 14644-14 | Class 9 according to ISO 14644-1   |
| Sound pressure level                                      | 50 dB(A)   |
| Degree of protection                                      | IP40   |
| Ambient temperature                                       | 0 °C ... 50 °C   |
| Impact energy in end positions                            | 5.0E-6 J   |
| Note on the impact energy in the end positions            | At maximum homing speed of 0.01 m/s  |
| Dynamic basic load rating fixed bearing                   | 2810 N   |
| Dynamic basic load rating linear guide                    | 1310 N   |
| Dynamic basic load rating ball screw                      | 1700 N   |
| Idle torque at v <sub>max</sub>                           | 0.029 Nm   |
| Idle torque at v <sub>min</sub>                           | 0.015 Nm   |

| Feature   | Value   |
|---|---|
| Max. force Fy   | 669 N   |
| Max. force Fz   | 669 N   |
| Fy at theoretical life value of 100 km (only guide consideration) | 1310 N  |
| Fz at theoretical life value of 100 km (only guide consideration) | 1310 N  |
| Max. moment Mx  | 2 Nm  |
| Max. moment My  | 2.1 Nm  |
| Max. moment Mz  | 2.1 Nm  |
| Mx at theoretical life value of 100 km (only guide consideration) | 5 Nm  |
| My at theoretical life value of 100 km (only guide consideration) | 4 Nm  |
| Mz at theoretical life value of 100 km (only guide consideration) | 4 Nm  |
| Max. radial force at drive shaft                                  | 30 N  |
| Max. feed force Fx  | 20 N  |
| Reference value effective load, horizontal                        | 2 kg  |
| Reference value effective load, vertical                          | 2 kg  |
| Static basic load rating ball screw                               | 2600 N  |
| Static basic load rating linear guide                             | 2440 N  |
| Mass moment of inertia JH per metre of stroke                     | 0.01507 kgcm <sup>2</sup>   |
| Mass moment of inertia JL per kg of working load                  | 0.00912 kgcm <sup>2</sup>   |
| Mass moment of inertia JO   | 0.00144 kgcm <sup>2</sup>   |
| Feed constant   | 6 mm/U  |
| Static basic load rating fixed bearing                            | 1340 N  |
| Reference service life  | 5000 km   |
| Maintenance interval  | Lifetime lubrication  |
| Moving mass for 0 mm stroke                                       | 83 g  |
| Additional moving mass per 10 mm stroke                           | 9 g   |
| Product weight  | 269 g   |
| Basic weight for 0 mm stroke                                      | 176 g   |
| Additional weight per 10 mm stroke                                | 19 g  |
| Type of mounting  | With female thread<br>With centring sleeve<br>With accessories<br>Via cylindrical dowel pin |
| Interface code, actuator  | V20   |
| Note on materials   | RoHS compliant  |
| Material guide slide  | Bearing steel   |
| Material guide rail   | Bearing steel   |
| Material housing  | Anodised wrought aluminium alloy  |
| Material yoke plate   | Anodised wrought aluminium alloy  |
| Material piston rod   | High-alloy stainless steel  |
| Material slide  | Anodised wrought aluminium alloy  |
| Material ball screw nut   | Bearing steel   |
| Material spindle  | Bearing steel   |