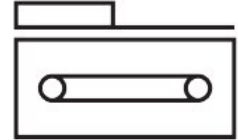
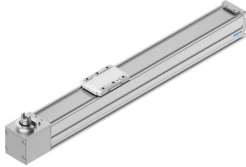


Toothed belt axis ELGC-TB-KF-45-200

Part number: 8062768

FESTO



 [General operating condition](#)

Data sheet

Feature	Value
Effective diameter of drive pinion	19.1 mm
Working stroke	200 mm
Size	45
Stroke reserve	0 mm
Toothed-belt pitch	2 mm
Mounting position	Any
Guide	Recirculating ball bearing guide
Design	Electromechanical linear axis With toothed belt
Type of motor	Stepper motor Servo motor
Symbol	00991212
Position detection	Via proximity switch For inductive sensors
Max. acceleration	15 m/s ²
Max. speed	1.2 m/s
Repetition accuracy	±0.1 mm
Duty cycle	100%
LABS (PWIS) conformity	VDMA24364 zone III
Suitability for the production of Li-ion batteries	Suitable for battery production with reduced Cu/Zn/Ni values (F1a)
Cleanroom suitability, measured according to ISO 14644-14	Class 7 according to ISO 14644-1
Storage temperature	-20 °C ... 60 °C
Degree of protection	IP40
Ambient temperature	0 °C ... 50 °C
Impact energy in end positions	1.25E-4 J
Note on the impact energy in the end positions	At maximum homing speed of 0.01 m/s
2nd moment of area Iy	140000 mm ⁴
2nd moment of area Iz	170000 mm ⁴
Max. drive torque	0.716 Nm
Max. force Fy	880 N
Max. force Fz	880 N
Max. force Fy total axis	300 N
Max. force Fz total axis	600 N
Fy at theoretical life value of 100 km (only guide consideration)	3240 N
Fz at theoretical life value of 100 km (only guide consideration)	3240 N
Max. idle running transfer resistance	7.8 N

Feature	Value
Max. moment Mx	5.5 Nm
Max. moment My	4.7 Nm
Max. moment Mz	4.7 Nm
Max. moment Mx total axis	5.5 Nm
Max. moment My total axis	4.7 Nm
Max. moment Mz total axis	4.7 Nm
Mx at theoretical life value of 100 km (only guide consideration)	20 Nm
My at theoretical life value of 100 km (only guide consideration)	17 Nm
Mz at theoretical life value of 100 km (only guide consideration)	17 Nm
Distance between slide surface and guide centre	42.8 mm
Max. feed force Fx	75 N
Frictional torque independent of load	0.075 Nm
Torsional mass moment of inertia It	8500 mm ⁴
Mass moment of inertia JH per metre of stroke	0.0281 kgcm ²
Mass moment of inertia JL per kg of working load	0.9119 kgcm ²
Mass moment of inertia JO	0.1862 kgcm ²
Feed constant	60 mm/U
Reference service life	5000 km
Maintenance interval	Lifetime lubrication
Moving mass	169 g
Weight of slide	55 g
Product weight	1219 g
Basic weight for 0 mm stroke	760 g
Additional weight per 10 mm stroke	23 g
Dynamic deflection (moving load)	0.05% of the axis length, max. 0.5 mm
Static deflection (load in standstill)	0.1% of the axis length
Interface code, actuator	V32
Material end cap	Painted die cast aluminium
Material profile	Anodised wrought aluminium alloy
Note on materials	RoHS compliant
Material cover tape	Stainless steel strip
Material drive cover	Painted die cast aluminium
Material guide slide	Steel
Material guide rail	Steel
Material pulleys	High-alloy stainless steel
Material slide	Die-cast aluminium
Material toothed belt	Polychloroprene or nitrile rubber (NBR) with glass cord and nylon coating