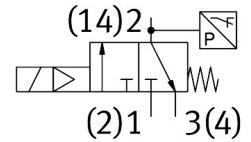
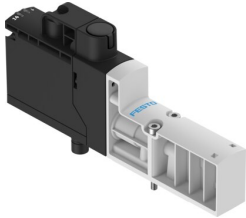


Solenoid valve

VSVA-BT-M32CS2-MS-A2-1T5L-PA

FESTO

Part number: 8066575



[PDF General operating condition](#)

Data sheet

| Feature | Value |
|---|--|
| Valve function | 3/2-way, closed, monostable |
| Type of actuation | Electric |
| Construction width | 18 mm |
| Standard nominal flow rate (standardised to DIN 1343) | 125 l/min |
| Standard nominal flow rate for exhaust | 125 l/min |
| Operating pressure | 0.3 MPa ... 1 MPa |
| Operating pressure | 3 bar ... 10 bar |
| Design | Poppet seat |
| Type of reset | Mechanical spring Pneumatic spring |
| Degree of protection | IP65 |
| Sealing principle | Soft |
| Mounting position | optional |
| Manual override | None |
| Type of piloting | Pilot actuated |
| Pilot air supply | Internal |
| Flow direction | Non-reversible |
| Symbol | 00997596 |
| lap | Underlap |
| Additional functions | Holding current reduction |
| Signal status display | Yellow LED, valve control Green LED, pressure switch, exhausted status |
| Switching position sensing | Via pressure switch, exhausted status |
| Duty cycle | 100% |
| Max. positive test pulse with 0 signal | 2000 µs |
| Max. negative test pulse with 1 signal | 1200 µs |
| Nominal pick-up current per solenoid coil | 60 mA to 35 ms |
| Nominal operating voltage DC | 24 V |
| Nominal current with current reduction | 11 mA after 35 ms |
| Characteristic coil data | 24 V DC: 1.6 W |
| Permissible voltage fluctuations | +/- 10 % |
| Operating medium | Compressed air to ISO 8573-1:2010 [7:4:4] |
| Note on operating and pilot medium | Lubricated operation not possible |
| Vibration resistance | Transport application test with severity level 2 to FN 942017-4 and EN 60068-2-6 |
| Shock resistance | Shock test with severity level 2 to FN 942017-5 and EN 60068-2-27 |

| Feature | Value |
|---|---|
| Corrosion resistance class CRC | 0 - No corrosion stress |
| LABS (PWIS) conformity | VDMA24364-B1/B2-L |
| Media temperature | -5 °C ... 50 °C |
| Pilot medium | Compressed air to ISO 8573-1:2010 [7:4:4] |
| Ambient temperature | -5 °C ... 50 °C |
| Mean time to failure (MTTF), subcomponent | 452 years, pressure switch |
| Product weight | 110 g |
| Switch-off point min. | 0.05 bar |
| Switch-on point | 0.2 bar |
| Switch-on point max. | 0.3 bar |
| Electrical connection | Plug-in |
| Type of mounting | On sub-base |
| Pneumatic connection, port 2 | G1/8 |
| Pneumatic connection, port 4 | G1/8 |
| Note on materials | RoHS-compliant |
| Material seals | HNBR NBR |
| Material housing | PA-reinforced |
| Material screws | Galvanised steel |
| Switching element function | N/C contact |