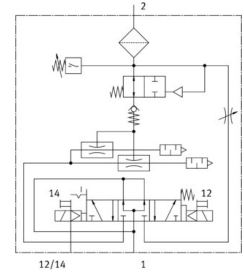
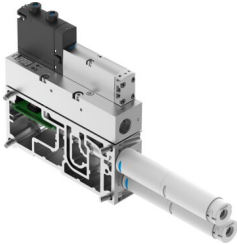


Vacuum generator VABF-S4-2-V2B1-G38-CB-VH-30-AP

Part number: 8067145

FESTO



[General operating condition](#)

Data sheet

| Feature | Value |
|---|---|
| Construction width | 35 mm |
| Nominal size, Laval nozzle | 3 mm |
| Silencer design | Open |
| Type of actuation | Electrical |
| Reverse polarity protection | For all electrical connections |
| Mounting position | Any |
| Ejector characteristic | High vacuum Standard |
| Manual override | Detenting Non-detenting Concealed |
| Measured variable | Relative pressure |
| Measuring principle | Piezoresistive |
| Switching function | Window comparator Threshold value comparator |
| Integrated function | Flow control On/off valve, electric Air-saving function, electric Power ejector pulse valve, electric Check valve Open silencer Vacuum switch |
| Symbol | 00995925 |
| Valve function | 5/3-way, pressurised |
| Display type | LED LED indicator 2 digits |
| Displayable units | kPa |
| Setting range threshold value | 0 MPa ... 0.099 MPa |
| Hysteresis setting range | 0 MPa ... 0.09 MPa |
| Setting options | Teach-in Via parameter sets |
| Signal status display | LED |
| Switching status display sensor | LED |
| Operating pressure for max. suction flow rate | 6 bar |

| Feature | Value |
|--|---|
| Operating pressure | 4 bar ... 8 bar |
| Operating pressure for max. vacuum | 6 bar |
| Max. vacuum | 0.092 MPa |
| Nominal operating pressure | 6 bar |
| Pilot pressure | 4 bar ... 10 bar |
| Max. suction flow rate against atmosphere | 167 l/min |
| Air supply time at nominal operating pressure | 0.25 s |
| Operational voltage range DC | 21.6 V ... 30 V |
| No-load supply current | 30 mA |
| Duty cycle | 100% |
| Approval | RCM |
| CE mark (see declaration of conformity) | To EU EMC Directive |
| Operating medium | Compressed air to ISO 8573-1:2010 [7:4:4] |
| Note on operating and pilot medium | Lubricated operation not possible |
| Corrosion resistance class CRC | 0 - No corrosion stress |
| LABS (PWIS) conformity | VDMA24364-B1/B2-L |
| Media temperature | -5 °C ... 50 °C |
| Sound pressure level at nominal operating pressure | 75 dB(A) |
| Degree of protection | IP65 |
| Protection class | III |
| Ambient temperature | -5 °C ... 50 °C |
| Product weight | 970 g |
| Pressure measuring range | -1 bar ... 0 bar |
| Display range start value | 0 MPa |
| Display range end value | 0.099 MPa |
| Accuracy in ± % FS | 3 %FS |
| Reproducibility of switching values FS | 1 % |
| Electrical control | Fieldbus |
| Electrical connection | Via CPX |
| Pneumatic connection, port 3 | Open silencer |
| Vacuum connection | G3/8 |
| Note on materials | RoHS compliant |
| Material seals | HNBR NBR |
| Material receiver nozzle | POM |
| Material housing | Wrought aluminium alloy |
| Material plate | Die-cast aluminium |
| Material adjusting screw | High-alloy stainless steel |
| Material silencer | POM Polyurethane foam |
| Material screws | Steel |
| Material transmitter nozzle | Wrought aluminium alloy |