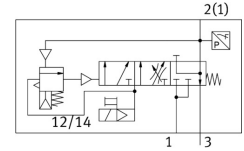


# Soft-start valve

## VABF-S6-1-P5A4S2YE-G12-1T5-PA

Part number: 8067405

FESTO



General operating condition

## Data sheet

Feature	Value
Max. positive test pulse with 0 signal	2000 µs
Max. negative test pulse with 1 signal	1200 µs
Width	40 mm
Length	155 mm
Grid dimension	41 mm
Valve size	40 mm
Vibration resistance	Transport application test with severity level 2 to FN 942017-4 and EN 60068-2-6
Shock resistance	Shock test with severity level 2 to FN 942017-5 and EN 60068-2-27
Type of actuation	Electric
Sealing principle	Soft
Mounting position	optional
Manual override	Detenting Self-resetting via electrical control signal
Design	Piston gate valve
Type of reset	Mechanical spring
Type of piloting	Pilot actuated
Pilot air supply	Internal
Flow direction	Non-reversible
Symbol	00997589
Valve function	Pressurisation Exhaust
Switching element function	N/C contact
lap	Underlap
Additional functions	Holding current reduction
Note on forced dynamization	Switching frequency min. 1/month
Signal status display	Yellow LED, valve control Green LED, pressure switch, exhausted status
Switching position sensing	Via pressure switch, exhausted status
Operating pressure	0.2 MPa ... 1 MPa
Operating pressure	2 bar ... 10 bar
Pilot pressure	0.2 MPa ... 1 MPa
Pilot pressure	2 bar ... 10 bar
Switchover pressure	Not adjustable Switching point between 50 - 75% of operating pressure
Suitability for vacuum	no

Feature	Value
Standard nominal flow rate ventilation	3000 l/min
Note on standard nominal flow rate, pressurisation	MPA: 1200 l/min VTSA: 3000 l/min
Standard nominal flow rate for exhaust	3300 l/min
Note on standard nominal flow rate, exhaust air	MPA: 1600 l/min VTSA: 3300 l/min
Duty cycle	100%
Nominal pick-up current per solenoid coil	60 mA to 35 ms
Nominal operating voltage DC	24 V
Nominal current with current reduction	11 mA after 35 ms
Characteristic coil data	24 V DC: 1.6 W
Permissible voltage fluctuations	+/- 10 %
Operating medium	Compressed air to ISO 8573-1:2010 [7:4:4]
Note on operating and pilot medium	Lubricated operation not possible
Corrosion resistance class CRC	0 - No corrosion stress
LABS (PWIS) conformity	VDMA24364-B1/B2-L
Storage temperature	-20 °C ... 60 °C
Media temperature	-5 °C ... 50 °C
Relative air humidity	Max. 90% at 40°C
Degree of protection	IP65
Pilot medium	Compressed air to ISO 8573-1:2010 [7:4:4]
Ambient temperature	-5 °C ... 50 °C
Mean time to failure (MTTF), subcomponent	452 years, pressure switch
Product weight	466 g
Switch-off point min.	0.05 bar
Switch-on point	0.2 bar
Switch-on point max.	0.3 bar
Electrical control	Fieldbus
Electrical connection	Plug-in
Type of mounting	On sub-base
Pneumatic connection, port 3	G1/2
Note on materials	RoHS-compliant
Material seals	HNBR NBR
Material housing	Wrought aluminium alloy
Material screws	Galvanised steel