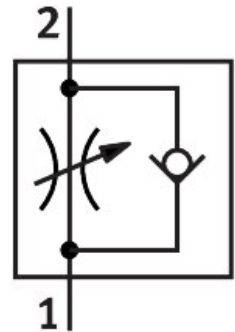



One-way flow control valve VFOE-LE-T-R38-Q8

Part number: 8068740

FESTO



 [General operating condition](#)

Data sheet

Feature	Value
Valve function	Exhaust air one-way flow control function
Pneumatic connection, port 1	QS-8
Pneumatic connection, port 2	R3/8
Type of actuation	Manual
Adjustment component	Rotary knob with detent
Type of mounting	Screw-in
Standard nominal flow rate in flow control direction	720 l/min
Standard nominal flow rate in blocked direction	600 l/min ... 900 l/min
Ambient temperature	-10 °C ... 60 °C
Material housing	PBT
Explosion protection	The information in the certificate must be observed! Zone 1 (ATEX) Zone 2 (ATEX) Zone 21 (ATEX) Zone 22 (ATEX)
Mounting position	optional
Symbol	00991452
Width across flats	21 mm
Rotatability	360°/no continuous swivelling permissible
Operating pressure complete temperature range	0.02 MPa ... 1 MPa
Operating pressure complete temperature range	0.2 bar ... 10 bar
Operating pressure complete temperature range	2.9 psi ... 145 psi
Standard flow rate in flow control direction 0.6->0 MPa (6->0 bar, 87->0 psi)	1150 l/min
Standard flow rate in non-return direction 0.6->0 MPa (6->0 bar, 87->0 psi)	1300 l/min ... 1500 l/min
Operating medium	Compressed air to ISO 8573-1:2010 [7:4:4]
Note on operating and pilot medium	Lubricated operation possible (in which case lubricated operation will always be required)
LABS (PWIS) conformity	VDMA24364 zone III
Cleanroom suitability, measured according to ISO 14644-14	Class 4 according to ISO 14644-1

Feature	Value
Media temperature	-10 °C ... 60 °C
Product weight	29.5 g
Note on materials	RoHS-compliant
Material cover	PBT
Material dynamic seals	HNBR
Material threaded bolt	Galvanised steel
Material release ring	PBT
Material static seals	NBR