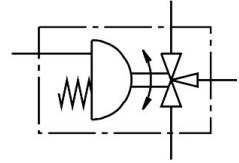


Ball valve actuator unit VZBM-A-1/2"-RP-25-F-3T-B2-PB20

FESTO

Part number: 8070276



 General operating condition

Data sheet

Feature	Value
Design	Semi-rotary drive
Type of actuation	Pneumatic
Mounting position	optional
Type of mounting	In-line installation
Connection Process valve	Rp1/2
Switching position indicator	Slot direction = flow direction
Nominal size DN	15
Operating pressure	5.5 bar ... 8 bar
Nominal pressure PN	25
Symbol	00995330
Medium	Compressed air to ISO 8573-1:2010 [-:-:-] Inert gases Water – no water vapour Neutral fluids
Operating medium	Compressed air to ISO 8573-1:2010 [7:4:4]
Note on operating and pilot medium	Dew point at least 10 °C below the ambient temperature and temperature of the medium Lubricated operation possible (in which case lubricated operation will always be required)
Media temperature	-20 °C ... 130 °C
Ambient temperature	-20 °C ... 80 °C
Flow rate Kv T hole angled	17 m ³ /h
Note on materials	RoHS-compliant
LABS (PWIS) conformity	VDMA24364 zone III
Material housing	Brass, nickel-plated
Material number housing	CW617N
Material seals	HNBR PTFE
Material ball	Brass, chrome-plated
Material number ball	CW614N
Material shaft	Brass
Material number shaft	CW614N
Product weight	1887 g
Corrosion resistance class CRC	1 - Low corrosion stress