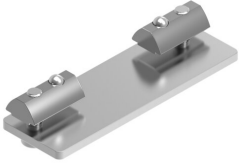


Switch lug DASI-E21-90/110-S8-SL

Part number: 8081061

FESTO



 [General operating condition](#)

Data sheet

Feature	Value
Size	90 110
Design	For sensor M8
Design	Switch lug
Corrosion resistance class CRC	2 - Moderate corrosion stress
LABS (PWIS) conformity	VDMA24364-B2-L
Ambient temperature	-10 °C ... 60 °C
Product weight	77 g
Type of mounting	Via slot nuts
Note on materials	RoHS-compliant
Material retaining bracket	Galvanised steel
Material screws	Galvanised steel