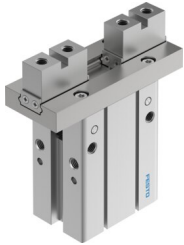


Parallel gripper DHPC-40-A-NO-S-2

Part number: 8116902

FESTO



 [General operating condition](#)

Data sheet

Feature	Value
Size	40
Stroke per gripper jaws	15 mm
Max. replacement accuracy	0.2 mm
Max. angular gripper jaw backlash ax, ay	0 deg
Max. gripper jaw backlash Sz	0 mm
Rotationally symmetrical	≤0.2 mm
Repetition accuracy, gripper	≤0.02 mm
Number of gripper jaws	2
Drive system	Pneumatic
Mounting position	optional
Mode of operation	Single-acting Open
Gripper function	Parallel
Gripper force back-up	During opening
Design	Connection direction at side Flat mounting method for gripper fingers Lever Force pilot operated motion sequence
Guide	Ball guide
Position detection	Via proximity switch
Symbol	00997349
Operating pressure	0.25 MPa ... 0.8 MPa
Operating pressure	2.5 bar ... 8 bar
Operating pressure	36.25 psi ... 116 psi
Max. operating frequency of gripper	1 Hz
Min. opening time at 0.6 MPa (6 bar, 87 psi)	300 ms
Min. closing time at 0.6 MPa (6 bar, 87 psi)	67 ms
Max. mass per external gripper finger	400 g
Operating medium	Compressed air to ISO 8573-1:2010 [7:4:4]
Note on operating and pilot medium	Lubricated operation possible (in which case lubricated operation will always be required)
Corrosion resistance class CRC	0 - No corrosion stress
LABS (PWIS) conformity	VDMA24364-B2-L
Suitability for the production of Li-ion batteries	Suitable for battery production with reduced Cu/Zn/Ni values (F1a)
Ambient temperature	-10 °C ... 60 °C
Total gripping force, closing, 0.6MPa (6bar, 87 psi)	675 N
Gripper force per gripper jaw, closing, 0.6 MPa (6 bar, 87 psi)	337.5 N

Feature	Value
Mass moment of inertia	16.27 kgcm ²
Max. force on gripper jaw Fz static	351.5 N
Max. torque at gripper Mx static	16.15 Nm
Max. torque at gripper My static	9.55 Nm
Max. torque at gripper Mz static	9.55 Nm
Product weight	1560 g
Type of mounting	Either: Direct mounting via through-hole Direct mounting via thread On mounting frame Via through-hole and dowel pin Via female thread and dowel pin
Pneumatic connection	M5
Note on materials	RoHS-compliant
Material housing	Anodised aluminium
Material gripper jaws	High-alloy stainless steel