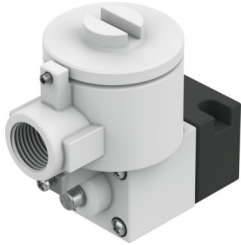


# Pilot valve MGXDH-3/2-1.2-230AC-KS

Part number: 8118344

FESTO



[General operating condition](#)

## Data sheet

| Feature                                     | Value  |
|---|--|
| Valve function                              | 3/2-way, closed, monostable  |
| Type of actuation                           | Electric   |
| Operating pressure                          | -0.09 MPa ... 0.8 MPa  |
| Operating pressure                          | -0.9 bar ... 8 bar   |
| Operating pressure                          | -13.05 psi ... 116 psi   |
| Design                                      | On/off valve   |
| Type of reset                               | Mechanical spring  |
| Certificate issuing authority               | 21-GA4BO-0068X<br>21-GA4BO-0069X   |
| Explosion ignition protection type for gas  | Ex db IIC T6...T3 Gb   |
| Explosion ignition protection type for dust | Ex tb IIIC T85°C Db  |
| Explosion ambient temperature               | -65°C ~+40°C T4<br>-65°C ~+55°C T3   |
| Degree of protection                        | IP66   |
| Manual override                             | Detenting  |
| Flow direction                              | Non-reversible   |
| Symbol                                      | 00991308   |
| Duty cycle                                  | 100%   |
| Insulation material class                   | H  |
| Characteristic coil data                    | 230 V AC: 50/60 Hz, initial power: 9.5 VA, holding power: 6.0 VA                           |
| Permissible frequency fluctuations          | +/- 10%  |
| Operating medium                            | Compressed air to ISO 8573-1:2010 [7:4:4]  |
| Note on operating and pilot medium          | Lubricated operation possible (in which case lubricated operation will always be required) |
| Corrosion resistance class CRC              | 2 - Moderate corrosion stress  |
| LABS (PWIS) conformity                      | VDMA24364 zone III   |
| Ambient temperature                         | -20 °C ... 80 °C   |
| Type of mounting                            | CNOMO  |
| Note on materials                           | RoHS-compliant   |