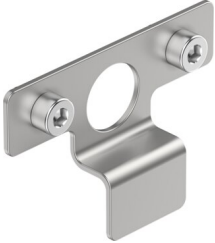


# Switch lug EAPM-L9-160-SLE

Part number: 8120125

FESTO



 [General operating condition](#)

## Data sheet

Feature	Value
Size	160
Mounting position	optional
Corrosion resistance class CRC	0 - No corrosion stress
LABS (PWIS) conformity	VDMA24364-B2-L
Ambient temperature	-10 °C ... 80 °C
Product weight	8 g
Note on materials	RoHS-compliant
Material switch lug	High-alloy steel