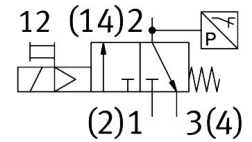
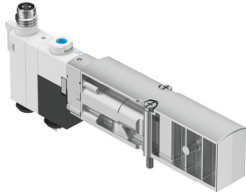


Solenoid valve VMPA14-M1H-EU-PI

Part number: 8126788

FESTO



 [General operating condition](#)

Data sheet

| Feature | Value |
|------------------------------------|--|
| Valve function | 3/2-way, closed, monostable |
| Type of actuation | Electric |
| Valve size | 14 mm |
| pneumatic working port | G1/8 |
| Operating voltage | 24V DC |
| Operating pressure | 0.3 MPa ... 0.8 MPa |
| Operating pressure | 3 bar ... 8 bar |
| Design | Poppet valve with spring return |
| Type of reset | Mechanical spring |
| Degree of protection | IP65 In assembled state To IEC 60529 |
| Sealing principle | Soft |
| Mounting position | optional |
| Manual override | Detenting Non-detenting |
| Type of piloting | Pilot actuated |
| Pilot air supply | External |
| Flow direction | Non-reversible |
| Symbol | 00997594 |
| lap | Underlap |
| Signal status display | yes |
| Pilot pressure | 0.3 MPa ... 0.8 MPa |
| Pilot pressure | 3 bar ... 8 bar |
| Suitability for vacuum | no |
| Permissible voltage fluctuations | +/- 25% |
| Operating medium | Compressed air to ISO 8573-1:2010 [7:4:4] |
| Note on operating and pilot medium | Lubricated operation not possible |
| Vibration resistance | Transport application test with severity level 2 to FN 942017-4 and EN 60068-2-6 |
| Shock resistance | Shock test with severity level 2 to FN 942017-5 and EN 60068-2-27 |
| Corrosion resistance class CRC | 1 - Low corrosion stress |
| LABS (PWIS) conformity | VDMA24364 zone III |
| Storage temperature | -20 °C ... 60 °C |
| Media temperature | -5 °C ... 50 °C |
| Relative air humidity | Max. 90% at 40°C |

| Feature | Value |
|---|-------------------|
| Ambient temperature | -5 °C ... 50 °C |
| Max. tightening torque for valve mounting | 0.25 Nm |
| Product weight | 36 g |
| Switch-off point min. | 0.05 bar |
| Switch-on point | 0.2 bar |
| Switch-on point max. | 0.3 bar |
| Type of mounting | With through-hole |
| Pilot air port 12/14 | G1/8 |
| Pilot exhaust port 82/84 | G1/8 |
| Pneumatic connection, port 1 | G1/8 |
| Pneumatic connection, port 2 | Internal |
| Pneumatic connection, port 3 | G1/8 |
| Note on materials | RoHS-compliant |
| Material seals | HNBR NBR |
| Material housing | PPA reinforced |
| Material screws | Coated steel |