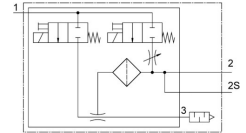
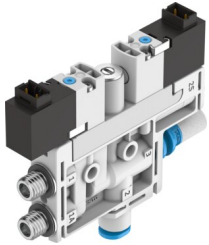



# Vacuum generator OVEL-5-H-10-P-VQ4-UC-C-A-H3

Part number: 8141094

FESTO



## Data sheet

 [General operating condition](#)

Feature	Value
Nominal size, Laval nozzle	0.45 mm
Grid dimension	10 mm
Silencer design	Closed
Mounting position	optional
Ejector characteristic	High vacuum Standard
Grade of filtration	40 µm
Manual override	Non-detenting
Integrated function	Electric ejector pulse Flow control Electric on-off valve Filter Silencer closed
Design	T-shape
Symbol	00995808
Valve function	Closed
Operating pressure for max. suction flow rate	0.3 MPa
Operating pressure for max. suction flow rate	3 bar
Operating pressure for max. suction flow rate	43.5 psi
Operating pressure	0.2 MPa ... 0.7 MPa
Operating pressure	2 bar ... 7 bar
Operating pressure	29 psi ... 101.5 psi
Operating pressure for max. vacuum	0.44 MPa
Operating pressure for max. vacuum	4.4 bar
Operating pressure for max. vacuum	63.8 psi
Max. vacuum	89 %
Nominal operating pressure	0.4 MPa
Nominal operating pressure	4 bar
Nominal operating pressure	58 psi
Max. suction flow rate against atmosphere	4 l/min
Air supply time at nominal operating pressure with ejector pulse	2 s
Operational voltage range DC	21.6 V ... 26.4 V
Duty cycle	100%
Characteristic coil data	24 V DC: 1.0 W
Approval	c UL us listed (OL)
Operating medium	Compressed air to ISO 8573-1:2010 [7:4:4]
Note on operating and pilot medium	Lubricated operation not possible

<b>Feature</b>	<b>Value</b>
Corrosion resistance class CRC	2 - Moderate corrosion stress
LABS (PWIS) conformity	VDMA24364-B1/B2-L
Media temperature	0 °C ... 50 °C
Sound pressure level at nominal operating pressure	51 dB(A)
Degree of protection	IP40
Ambient temperature	0 °C ... 50 °C
Product weight	44 g
Electrical connection input, function	Ejector pulse Vacuum generation
Electrical connection input, connection type	2x plug connector
Electrical connection input, connector system	Connection pattern H
Electrical connection input, number of connections/cores	2
Electrical connection input, connection pattern	00995626
Input electrical connection, mounting type	Snap-locking
Type of mounting	On manifold rail
Pneumatic connection, port 1	Common line
Pneumatic connection, port 3	Silencer closed
Vacuum connection	For tubing outside diameter of 4 mm
Material connecting thread	POM
Note on materials	RoHS-compliant
Material seals	NBR
Material receiver nozzle	POM
Material filter	POM
Material housing	PA-reinforced
Material hollow bolt	Wrought aluminium alloy
Material adjusting screw	Steel
Material silencer	PA-reinforced PE
Material screws	Steel
Material transmitter nozzle	Wrought aluminium alloy