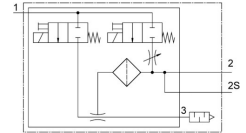
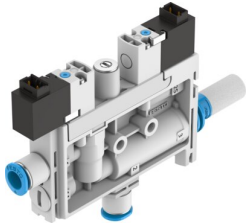


Vacuum generator OVEL-7-H-15-PQ-VQ4-UC-C-A-H3

Part number: 8141100

FESTO



 [General operating condition](#)

Data sheet

Feature	Value
Nominal size, Laval nozzle	0.7 mm
Grid dimension	15 mm
Silencer design	Closed
Mounting position	optional
Ejector characteristic	High vacuum Standard
Grade of filtration	40 µm
Manual override	Non-detenting
Integrated function	Electric ejector pulse Flow control Electric on-off valve Filter Silencer closed
Design	T-shape
Symbol	00995808
Valve function	Closed
Operating pressure for max. suction flow rate	0.4 MPa
Operating pressure for max. suction flow rate	4 bar
Operating pressure for max. suction flow rate	58 psi
Operating pressure	0.2 MPa ... 0.7 MPa
Operating pressure	2 bar ... 7 bar
Operating pressure	29 psi ... 101.5 psi
Operating pressure for max. vacuum	0.48 MPa
Operating pressure for max. vacuum	4.8 bar
Operating pressure for max. vacuum	69.6 psi
Max. vacuum	92 %
Nominal operating pressure	0.4 MPa
Nominal operating pressure	4 bar
Nominal operating pressure	58 psi
Max. suction flow rate against atmosphere	17 l/min
Air supply time at nominal operating pressure with ejector pulse	1.2 s
Operational voltage range DC	21.6 V ... 26.4 V
Duty cycle	100%
Characteristic coil data	24 V DC: 1.0 W
Approval	c UL us listed (OL)
Operating medium	Compressed air to ISO 8573-1:2010 [7:4:4]
Note on operating and pilot medium	Lubricated operation not possible

Feature	Value
Corrosion resistance class CRC	2 - Moderate corrosion stress
LABS (PWIS) conformity	VDMA24364-B1/B2-L
Media temperature	0 °C ... 50 °C
Sound pressure level at nominal operating pressure	56 dB(A)
Degree of protection	IP40
Ambient temperature	0 °C ... 50 °C
Product weight	58 g
Electrical connection input, function	Ejector pulse Vacuum generation
Electrical connection input, connection type	2x plug connector
Electrical connection input, connector system	Connection pattern H
Electrical connection input, number of connections/cores	2
Electrical connection input, connection pattern	00995626
Input electrical connection, mounting type	Snap-locking
Type of mounting	With through-hole
Pneumatic connection, port 1	For tubing outer diameter of 4 mm
Pneumatic connection, port 3	Silencer closed
Vacuum connection	For tubing outside diameter of 4 mm
Material connecting thread	POM
Note on materials	RoHS-compliant
Material seals	NBR
Material receiver nozzle	POM
Material filter	POM
Material housing	PA-reinforced
Material adjusting screw	Steel
Material silencer	PA-reinforced PE
Material screws	Steel
Material transmitter nozzle	Wrought aluminium alloy