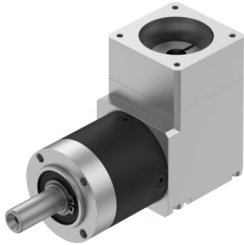


Gear unit EMGA-40-A-G8-40P

Part number: 8141732

FESTO



 [General operating condition](#)

Data sheet

| Feature | Value |
|-------------------------------------|-------------------------|
| Gear unit flange size | 40 mm |
| Motor flange size | 40 mm |
| Torsional backlash | 0.35 deg |
| Type of gear unit | Right-angle gear unit |
| Gear unit ratio | 8:1 |
| Max. drive speed | 18000 rpm |
| Operating temperature of gear unit | -25 °C ... 90 °C |
| LABS (PWIS) conformity | VDMA24364-B2-L |
| Degree of protection | IP54 |
| Continuous output torque | 6 Nm |
| Mass moment of inertia of gear unit | 0.032 kgcm ² |
| Max. output torque | 10 Nm |
| Max. efficiency | 92 % |
| Torsional rigidity | 0.7 Nm/arcmin |
| Product weight | 500 g |
| Permissible axial shaft load | 200 N |
| Permissible radial shaft load | 200 N |
| Gear unit interface, output shaft | 40G |
| Gear unit interface, drive shaft | 40P |
| Note on materials | RoHS-compliant |