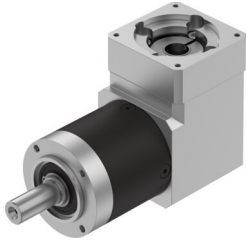


# Gear unit EMGA-60-A-G20-60P

Part number: 8141740

FESTO



 [General operating condition](#)

## Data sheet

Feature	Value
Gear unit flange size	60 mm
Motor flange size	60 mm
Torsional backlash	0.3 deg
Type of gear unit	Right-angle gear unit
Gear unit ratio	20:1
Max. drive speed	13000 rpm
Operating temperature of gear unit	-25 °C ... 90 °C
LABS (PWIS) conformity	VDMA24364-B2-L
Degree of protection	IP54
Continuous output torque	44 Nm
Mass moment of inertia of gear unit	0.256 kgcm <sup>2</sup>
Max. output torque	70 Nm
Max. efficiency	92 %
Torsional rigidity	2 Nm/arcmin
Product weight	1900 g
Permissible axial shaft load	500 N
Permissible radial shaft load	400 N
Gear unit interface, output shaft	60G
Gear unit interface, drive shaft	60P
Note on materials	RoHS-compliant