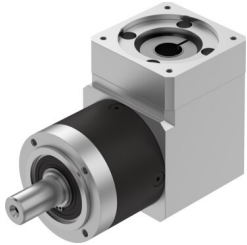


# Gear unit EMGA-80-A-G8-80P

Part number: 8141744

FESTO



 [General operating condition](#)

## Data sheet

Feature	Value
Gear unit flange size	80 mm
Motor flange size	80 mm
Torsional backlash	0.22 deg
Type of gear unit	Right-angle gear unit
Gear unit ratio	8:1
Max. drive speed	7000 rpm
Operating temperature of gear unit	-25 °C ... 90 °C
LABS (PWIS) conformity	VDMA24364-B2-L
Degree of protection	IP54
Continuous output torque	50 Nm
Mass moment of inertia of gear unit	0.934 kgcm <sup>2</sup>
Max. output torque	80 Nm
Max. efficiency	94 %
Torsional rigidity	4.2 Nm/arcmin
Product weight	4400 g
Permissible axial shaft load	1000 N
Permissible radial shaft load	750 N
Gear unit interface, output shaft	80G
Gear unit interface, drive shaft	80P
Note on materials	RoHS-compliant