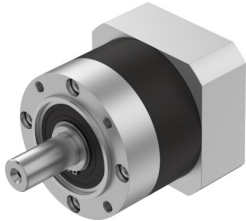


# Gear unit EMGA-120-P-G8-SAS-100

Part number: 8141753

FESTO



 [General operating condition](#)

## Data sheet

Feature	Value
Gear unit flange size	120 mm
Motor flange size	100 mm
Torsional backlash	0.12 deg
Type of gear unit	Planetary gear
Gear unit ratio	8:1
Max. drive speed	6500 rpm
Operating temperature of gear unit	-25 °C ... 90 °C
LABS (PWIS) conformity	VDMA24364-B2-L
Degree of protection	IP54
Continuous output torque	120 Nm
Mass moment of inertia of gear unit	1.431 kgcm <sup>2</sup>
Max. output torque	192 Nm
Max. efficiency	97 %
Torsional rigidity	18 Nm/arcmin
Product weight	6000 g
Permissible axial shaft load	2500 N
Permissible radial shaft load	1750 N
Gear unit interface, output shaft	120G
Gear unit interface, drive shaft	100A
Note on materials	RoHS-compliant