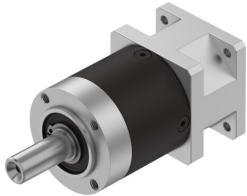


Gear unit EMGA-40-P-G8-SST-42

Part number: 8141762

FESTO



 [General operating condition](#)

Data sheet

Feature	Value
Gear unit flange size	40 mm
Motor flange size	42 mm
Torsional backlash	0.25 deg
Type of gear unit	Planetary gear
Gear unit ratio	8:1
Max. drive speed	18000 rpm
Operating temperature of gear unit	-25 °C ... 90 °C
LABS (PWIS) conformity	VDMA24364-B2-L
Degree of protection	IP54
Continuous output torque	6 Nm
Mass moment of inertia of gear unit	0.015 kgcm ²
Max. output torque	10 Nm
Max. efficiency	96 %
Torsional rigidity	0.8 Nm/arcmin
Product weight	400 g
Gear unit interface, output shaft	40G
Gear unit interface, drive shaft	42A
Note on materials	RoHS-compliant