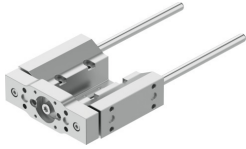


Guide unit EAGF-P2-KF-32-100

Part number: 8158029

FESTO



 General operating condition

Data sheet

Feature	Value
Size	32
Stroke	100 mm
Reversing backlash theoretical	0 µm
Mounting position	optional
Guide	Recirculating ball bearing guide
Design	Guidance
Max. acceleration	25 m/s ²
Max. speed	1 m/s
Corrosion resistance class CRC	0 - No corrosion stress
LABS (PWIS) conformity	VDMA24364 zone III
Degree of protection	IP40
Ambient temperature	0 °C ... 60 °C
Max. force F _y	160 N
Max. force F _y static	355 N
Max. force F _z	160 N
Max. force F _z static	355 N
Max. moment M _x	6 Nm
Max. torque M _x static	13 Nm
Max. moment M _y	4 Nm
Max. torque M _y static	9 Nm
Max. moment M _z	4 Nm
Max. torque M _z static	9 Nm
Displacement force	1.6 N
Moving mass for 0 mm stroke	170 g
Basic weight for 0 mm stroke	613 g
Additional weight per 10 mm stroke	7.9 g
Additional moving mass per 10 mm stroke	7.9 g
Centre of gravity at 0 mm stroke	26 mm
Centre of gravity additional of moving mass per 10 mm	4.3 mm
Type of mounting	Via female thread
Note on materials	RoHS-compliant
Material guide component	Tempered steel Hard-chrome-plated
Material housing	Anodised
Material yoke plate	Wrought aluminium alloy Anodised