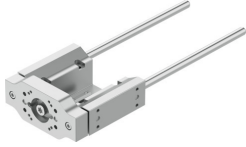


Guide unit EAGF-P2-KF-60-300

Part number: 8158031

FESTO



 [General operating condition](#)

Data sheet

Feature	Value
Size	60
Stroke	300 mm
Reversing backlash theoretical	0 µm
Mounting position	optional
Guide	Recirculating ball bearing guide
Design	Guidance
Max. acceleration	25 m/s ²
Max. speed	1 m/s
Corrosion resistance class CRC	0 - No corrosion stress
LABS (PWIS) conformity	VDMA24364 zone III
Degree of protection	IP40
Ambient temperature	0 °C ... 60 °C
Max. force F _y	380 N
Max. force F _y static	510 N
Max. force F _z	380 N
Max. force F _z static	510 N
Max. moment M _x	20 Nm
Max. torque M _x static	27 Nm
Max. moment M _y	15 Nm
Max. torque M _y static	20 Nm
Max. moment M _z	15 Nm
Max. torque M _z static	20 Nm
Displacement force	3 N
Moving mass for 0 mm stroke	583 g
Basic weight for 0 mm stroke	1614 g
Additional weight per 10 mm stroke	17.8 g
Additional moving mass per 10 mm stroke	17.8 g
Centre of gravity at 0 mm stroke	31 mm
Centre of gravity additional of moving mass per 10 mm	4.3 mm
Type of mounting	Via female thread
Note on materials	RoHS-compliant
Material guide component	Tempered steel Hard-chrome-plated
Material housing	Anodised
Material yoke plate	Wrought aluminium alloy Anodised