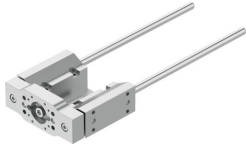


Guide unit EAGF-P2-KF-45-150

Part number: 8158125

FESTO



 General operating condition

Data sheet

Feature	Value
Size	45
Stroke	150 mm
Reversing backlash theoretical	0 µm
Mounting position	optional
Guide	Recirculating ball bearing guide
Design	Guidance
Max. acceleration	25 m/s ²
Max. speed	1 m/s
Corrosion resistance class CRC	0 - No corrosion stress
LABS (PWIS) conformity	VDMA24364 zone III
Degree of protection	IP40
Ambient temperature	0 °C ... 60 °C
Max. force F _y	320 N
Max. force F _y static	415 N
Max. force F _z	320 N
Max. force F _z static	415 N
Max. moment M _x	15 Nm
Max. torque M _x static	19 Nm
Max. moment M _y	10 Nm
Max. torque M _y static	12 Nm
Max. moment M _z	10 Nm
Max. torque M _z static	12 Nm
Displacement force	2 N
Moving mass for 0 mm stroke	342 g
Basic weight for 0 mm stroke	1037 g
Additional weight per 10 mm stroke	12.3 g
Additional moving mass per 10 mm stroke	12.3 g
Centre of gravity at 0 mm stroke	25 mm
Centre of gravity additional of moving mass per 10 mm	4.3 mm
Type of mounting	Via female thread
Note on materials	RoHS-compliant
Material guide component	Tempered steel Hard-chrome-plated
Material housing	Anodised
Material yoke plate	Wrought aluminium alloy Anodised