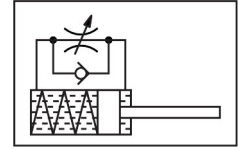



Shock absorber DYSD-Q11-20-16-Y1F-L-Y10

Part number: 8161531

FESTO



 General operating condition

Data sheet

Feature	Value
Size	20
Stroke	16 mm
Cushioning	Self-adjusting
Mounting position	optional
Position detection	Without
Symbol	00991495
Max. impact speed	1 m/s
Reset time at room temperature	0.3 s
Mode of operation	Pushing Single-acting
Corrosion resistance class CRC	2 - Moderate corrosion stress
LABS (PWIS) conformity	VDMA24364-B2-L
Ambient temperature	0 °C ... 60 °C
Cushioning length	16 mm
Max. stop force	3000 N
Max. energy consumption per stroke	90 J
Max. energy consumption per hour	92000 J
Max. residual energy	0.32 J
Reset force	75 N
Min. insertion force	260 N
Product weight	385 g
Type of mounting	Via lock nut
Note on materials	RoHS-compliant
Material seals	NBR
Material housing	Galvanised steel
Material piston rod	High-alloy steel
Material nut	Galvanised steel