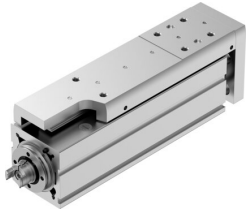


Mini slide EGSC-BS-KF-45-100-3P

Part number: 8162076

FESTO



[PDF](#) General operating condition

Data sheet

Feature	Value
Working stroke	100 mm
Size	45
Stroke reserve	0 mm
Reversing backlash theoretical	150 µm
Spindle diameter	10 mm
Spindle pitch	3 mm/U
Mounting position	optional
Guide	Recirculating ball bearing guide
Design	With ball screw drive
Type of motor	Stepper motor Servo motor
Referencing	Positive fixed stop block Negative fixed stop block Reference switch
Spindle type	Ball screw drive
Symbol	00992069
Position detection	Via proximity switch
Max. acceleration	5 m/s ²
Max. rotational speed	3600 rpm
Max. speed	0.18 m/s
Repetition accuracy	±0.015 mm
Duty cycle	100%
Corrosion resistance class CRC	0 - No corrosion stress
LABS (PWIS) conformity	VDMA24364 zone III
Suitability for the production of Li-ion batteries	Suitable for battery production with reduced Cu/Zn/Ni values (F1a)
Cleanroom suitability, measured according to ISO 14644-14	Class 9 according to ISO 14644-1
Sound pressure level	55 dB(A)
Degree of protection	IP40
Ambient temperature	0 °C ... 50 °C
Impact energy in end positions	1.4E-5 J
Note on the impact energy in the end positions	At maximum homing speed of 0.01 m/s
Dynamic basic load rating fixed bearing	7413 N
Dynamic basic load rating linear guide	3240 N
Dynamic basic load rating ball screw	3500 N
Idle torque at v _{max}	0.059 Nm
Idle torque at v _{min}	0.015 Nm

Feature	Value
Max. force Fy	1314 N
Max. force Fz	1314 N
Fy at theoretical life value of 100 km (only guide consideration)	3240 N
Fz at theoretical life value of 100 km (only guide consideration)	3240 N
Max. moment Mx	8.1 Nm
Max. moment My	7 Nm
Max. moment Mz	7 Nm
Mx at theoretical life value of 100 km (only guide consideration)	20 Nm
My at theoretical life value of 100 km (only guide consideration)	17 Nm
Mz at theoretical life value of 100 km (only guide consideration)	17 Nm
Max. radial force at drive shaft	180 N
Max. feed force Fx	120 N
Reference value effective load, horizontal	12 kg
Reference value effective load, vertical	12 kg
Static basic load rating ball screw	6300 N
Static basic load rating linear guide	5630 N
Mass moment of inertia JH per metre of stroke	0.04918 kgcm ²
Mass moment of inertia JL per kg of working load	0.0028 kgcm ²
Mass moment of inertia JO	0.01045 kgcm ²
Feed constant	3 mm/U
Static basic load rating fixed bearing	3966 N
Reference service life	5000 km
Maintenance interval	Life-time lubrication
Moving mass for 0 mm stroke	212 g
Additional moving mass per 10 mm stroke	30 g
Product weight	1237 g
Basic weight for 0 mm stroke	608 g
Additional weight per 10 mm stroke	63 g
Type of mounting	Via female thread Via centring sleeve With accessories Via cylindrical pin
Interface code, actuator	V32
Note on materials	RoHS-compliant
Material guide slide	Rolled steel
Material guide rail	Rolled steel
Material housing	Anodised wrought aluminium alloy
Material yoke plate	Anodised wrought aluminium alloy
Material piston rod	High-alloy stainless steel
Material slide	Anodised wrought aluminium alloy
Material ball screw nut	Rolled steel
Material spindle	Rolled steel