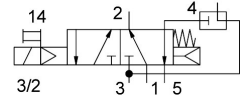
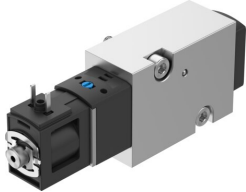


# Solenoid valve VSNC-FKA-M32C-RD-G18-1C1-S

FESTO

Part number: 8166612



[General operating condition](#)

## Data sheet

Feature	Value
Valve function	Connections swapped
Type of actuation	Electric
Construction width	25.5 mm
Standard nominal flow rate (standardised to DIN 1343)	400 l/min
pneumatic working port	NAMUR port pattern
Operating voltage	24V DC
Operating pressure	0.25 MPa ... 0.8 MPa
Operating pressure	2.5 bar ... 8 bar
Design	Piston slide with sealing ring
Type of reset	Mechanical spring Pneumatic spring
Degree of protection	IP65
Exhaust-air function	With flow control option
Sealing principle	Soft
Mounting position	optional
Conforms to standard	VDI/VDE 3845 (NAMUR)
Manual override	Detenting
Type of piloting	Pilot actuated
Pilot air supply	Internal
Flow direction	Non-reversible
Symbol	00997365
lap	Overlap
b value	0.3
C value	2.1 l/sbar
Standard nominal flow rate, exhaust return 4→3	100 l/min
Switching time off	≤50 ms
Switching time on	≤50 ms
Duty cycle	100%
Characteristic coil data	24 V DC: 2.4 W
Operating medium	Compressed air to ISO 8573-1:2010 [7:4:4]
Note on operating and pilot medium	Lubricated operation possible (in which case lubricated operation will always be required)
Corrosion resistance class CRC	1 - Low corrosion stress
LABS (PWIS) conformity	VDMA24364 zone III
Storage temperature	-20 °C ... 60 °C
Media temperature	-20 °C ... 50 °C

<b>Feature</b>	<b>Value</b>
Ambient temperature	-20 °C ... 50 °C
Product weight	220 g
Electrical connection	Type C
Type of mounting	With through-hole
Breather connection	Not ducted
Pneumatic connection, port 1	G1/8
Pneumatic connection, port 2	NAMUR port pattern
Pneumatic connection, port 3	G1/8
Pneumatic connection, port 4	NAMUR port pattern
Pneumatic connection, port 5	G1/8
Note on materials	RoHS-compliant
Material cover	PA-reinforced
Material seals	NBR
Material housing	Wrought aluminium alloy
Manual override material	PA-reinforced
Material piston	Wrought aluminium alloy
Material screws	High-alloy stainless steel