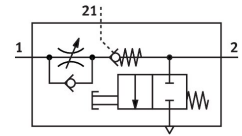


# One-way flow control valve VFOF-CE-BAH-Q4-Q4

Part number: 8193268

FESTO



[PDF](#) General operating condition

## Data sheet

Feature	Value
Valve function	Exhaust air one-way flow control function
Selection of additional functions	Actuated non-return valve
Pneumatic connection, port 1	QS-4
Pneumatic connection, port 2	QS-4
Type of actuation	Manual
Pilot air port 21	QS-4
Standard nominal flow rate in flow control direction	120 l/min
Standard nominal flow rate in blocked direction	210 l/min
Operating pressure	≤1 MPa
Operating pressure	≤10 bar
Operating pressure	≤145 psi
Pilot pressure	0.2 MPa ... 1 MPa
Pilot pressure	2 bar ... 10 bar
Pilot pressure	29 psi ... 145 psi
Ambient temperature	-10 °C ... 60 °C
Material housing	PBT
Explosion protection	Zone 2 (ATEX) Zone 22 (ATEX)
Mounting position	optional
Type act., cont. n.-r. func.	Pneumatic
Manual exhaust function	Non-detenting
Symbol	00991958
Operating pressure complete temperature range	0.2 bar ... 10 bar
Standard flow rate in flow control direction 0.6->0 MPa (6->0 bar, 87->0 psi)	200 l/min
Standard flow rate in non-return direction 0.6->0 MPa (6->0 bar, 87->0 psi) actuated	210 l/min
Standard flow rate in non-return direction 0.6->0 MPa (6->0 bar, 87->0 psi) non-actuated	210 l/min
Standard nominal flow rate in non-return direction actuated	125 l/min
Standard nominal flow rate in non-return direction non-actuated	115 l/min
Switching time off	9 ms
Switching time on	6 ms
Operating medium	Compressed air to ISO 8573-1:2010 [7:4:4]
Note on operating and pilot medium	Lubricated operation possible
LABS (PWIS) conformity	VDMA24364-B1/B2-L

<b>Feature</b>	<b>Value</b>
Storage temperature	-20 °C ... 70 °C
Media temperature	-10 °C ... 60 °C
Pilot medium	Compressed air to ISO 8573-1:2010 [7:4:4]
Permissible actuation moment, regulating screw	1 Nm
Product weight	25.1 g
Material covering	ES-BE
Note on materials	RoHS-compliant
Material cover	PBT
Material seals	NBR
Material sleeve	Wrought aluminium alloy
Material release ring	POM
Material adjusting screw	Brass