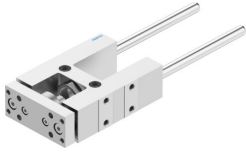


# Guide unit FEN-20-100-GF

Part number: 8204047

FESTO



 [General operating condition](#)

## Data sheet

Feature	Value
Size	20
Stroke	100 mm
Mounting position	optional
Guide	Plain-bearing guide
Design	Guidance
Explosion protection	The information in the certificate must be observed!
LABS (PWIS) conformity	VDMA24364-B2-L
Ambient temperature	-20 °C ... 80 °C
Displacement force	15 N
Moving mass	389 g
Product weight	993 g
Type of mounting	Via female thread
Note on materials	RoHS-compliant
Material guide component	High-alloy steel
Material housing	Anodised wrought aluminium alloy
Material yoke plate	Anodised wrought aluminium alloy