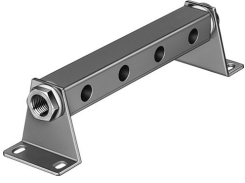


Common supply manifold PAL-5-1/4-4

Part number: 9190

FESTO



 [General operating condition](#)

Data sheet

Feature	Value
Max. number of valve positions	4
LABS (PWIS) conformity	VDMA24364-B1/B2-L
Product weight	480 g
Type of mounting	Via mounting bracket
Pneumatic connection, port 1	G3/8
Note on materials	RoHS-compliant
Material sub-base	Aluminium